

How to Access AiM Data Files without AiM Software

We've had requests in the recent past to open xrz/xrk files in order to access the data recorded by our devices using external software. It works (beta version) also with drk files. Most of the requests received till now were for MatLab(™) or custom developed software.

We developed a DLL (32 and 64 bit) that lets users accomplish this task in a very easy way. You can download two complete examples to understand how to use the DLL.

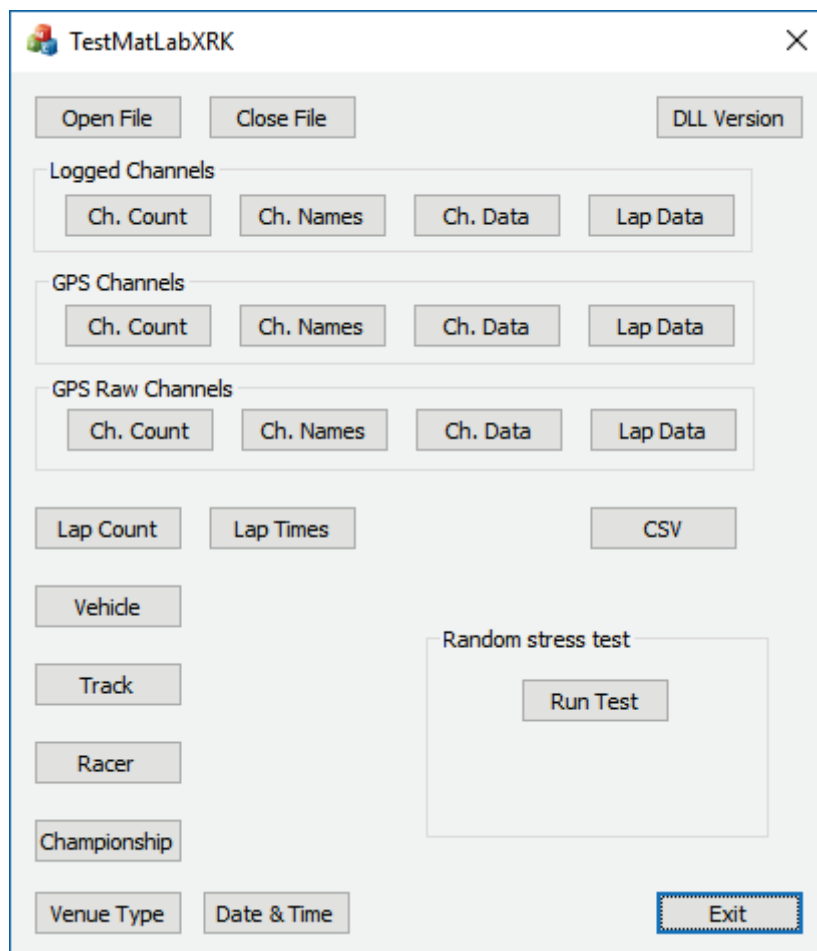
Downloadable examples:

1. [Visual Studio 2017](#)
2. [MatLab\(™\)](#)
3. ... please don't forget to let us know about how you use the DLL!

Visual Studio 2017

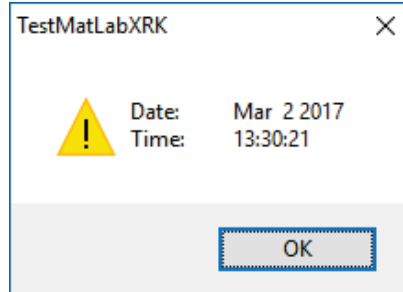
http://www.aim-sportline.com/aim-software-betas/DLL/TestMatLabXRK_20230112.zip

Unzip the file content on your hard disk, then identify the "TestMatLabXRK.sln" file and open it with Visual Studio 2010. Compile it and run it, you should see what in the following picture.

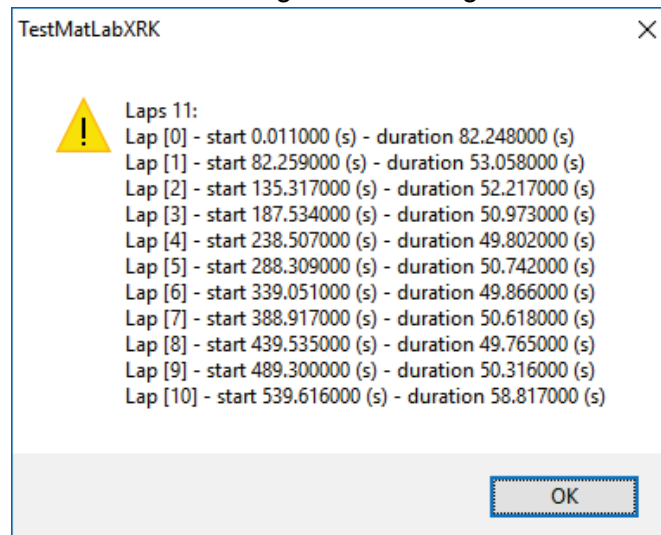


It's a simple dialog window that lets you test all DLL functions. All functions are documented directly in the "MatLabXRK.h" file supplied. Few quick hints are given in the following lines.

"DLL Version" has to be used to verify the DLL build time and date.



"Lap Times" are, as well as all other timing information, given in seconds.



"Vehicle", "Racer", "Championship" and "Venue Type" refer to data set by users into AiM loggers before the on track session, "Track" is automatically identified by the AiM loggers among all the tracks previously sent to them using RS3, "Date & Time" refers to start acquisition and is managed by the loggers themselves.

Channels data values are available on a session timing base, or a lap timing base.

Logged channels are 'according to device configuration'.

GPS raw channels are: "ECEF position_Y", "ECEF position_Z", "ECEF velocity_X", "ECEF velocity_Y", "ECEF velocity_Z", "N Satellites".

GPS channels are computed by the DLL upon GPS raw channels: GPS_Speed", "GPS_Nsat", GPS_LatAcc", GPS_LonAcc", GPS_Slope", GPS_Heading", GPS_Gyro", GPS_Altitude", GPS_PosAccuracy", GPS_SpdAccuracy", GPS_FreqAccuracy", GPS_East", GPS_North".

MatLab(™)

http://www.aim-sportline.com/aim-software-betas/DLL/TestMatLabXRK_m_20230112.zip

This example has been developed by:

Michael Metzner

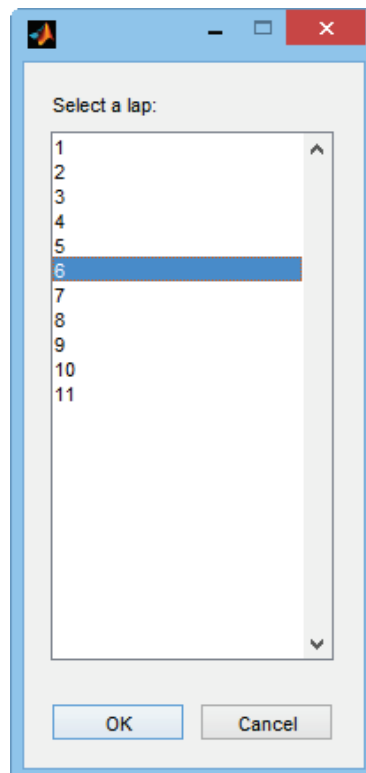
metzner software engineering

<http://www.metzner-se.com>

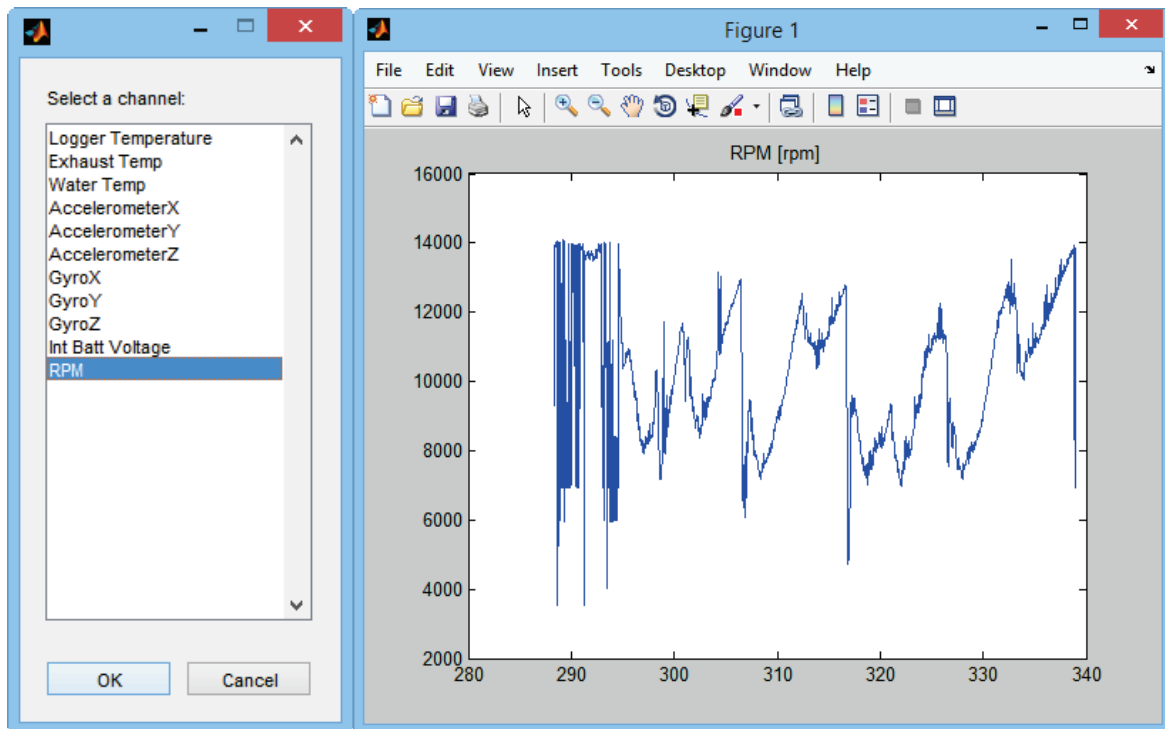
Unzip the file content on your hard disk, then load/run the "XrkAccessExample.m" file to see an example of how the dll works.

When calling the example script without any filename you'll be asked to select a XRK/XRZ file. Two sample files are supplied.

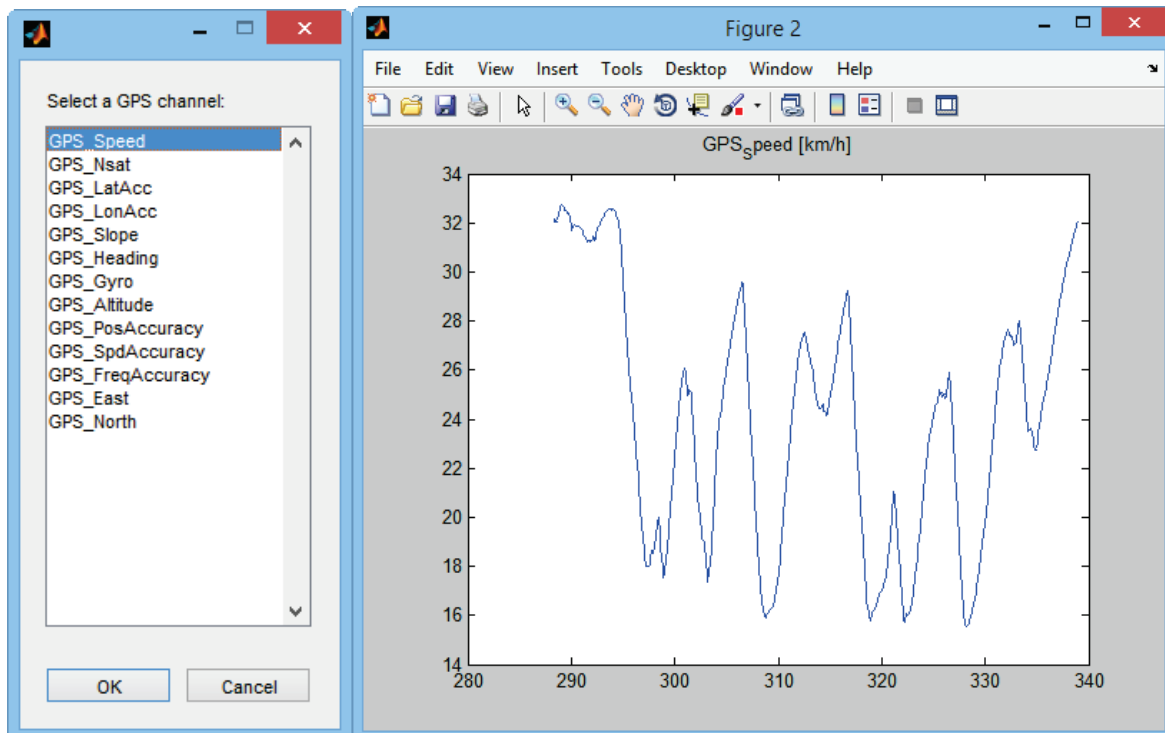
After loading the file you'll have to select a lap, like in the following figure.



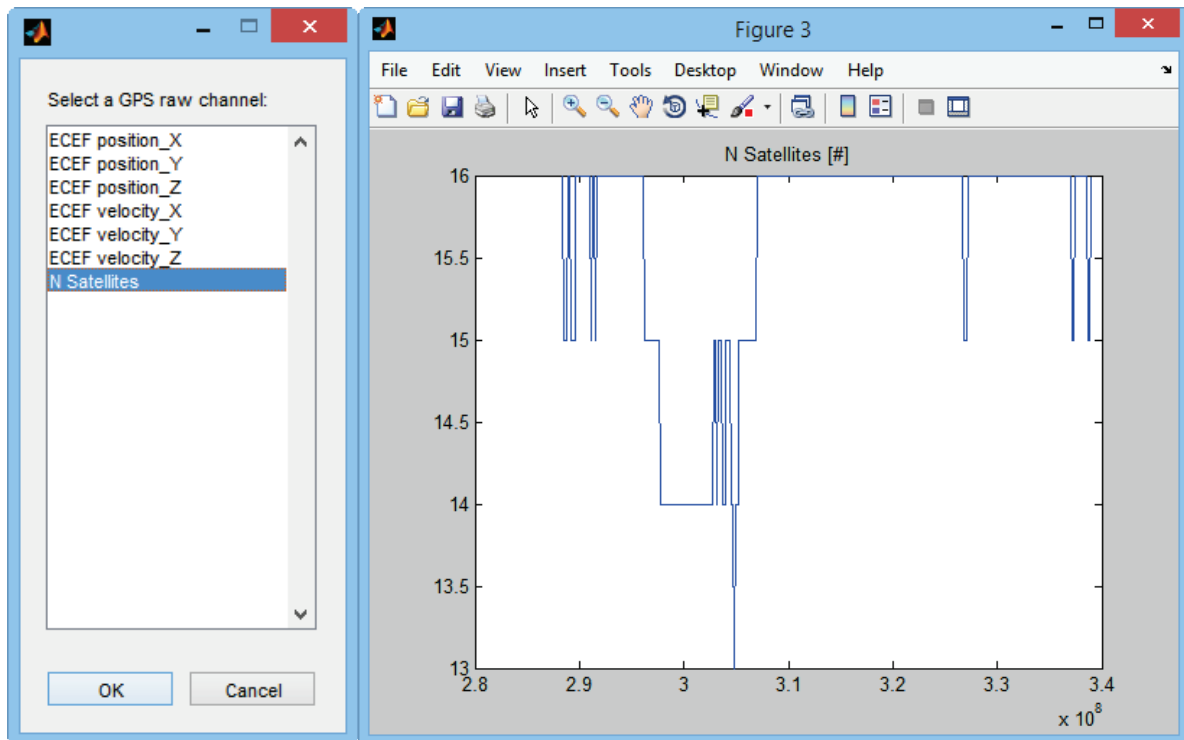
After lap selection you'll have to select a data channel and the corresponding data are plotted, like in the following two figures.



Afterwards you'll be asked to select a GPS channel and the corresponding data are plotted, see the two following figures.



Finally you'll be prompted to select a GPS raw data channel and the corresponding data are plotted.



The Matlab command windows, after running the example script, will look like the following figure.

```

Command Window
>> KskkocessExample

ans =

Feb 17 2017
|
ans =

17:20:26

vehicle name:
track name: Adria Kart
racer name: A.GIARDUCCI
championship:
venue type:
timestamp: 2016-01-23 12:05:04

iLapCount =

11

iChannelCount =

11

aLapTimes =

0.0110 82.2480
82.2580 53.0580
105.8170 82.2170
187.5040 50.9700
228.5070 49.8020
286.0050 80.7420
336.0510 49.8460
388.9170 50.6180
449.3050 49.7680
489.3000 50.3160
539.6160 58.8170

iGpsChannelCount =

10

iGpsRawChannelCount =

7

cGpsRawChannelNames =

Column 1 through 6
'ECEF position_X' 'ECEF position_Y' 'ECEF position_Z' 'ECEF velocity_X' 'ECEF velocity_Y' 'ECEF velocity_Z'
Column 7
'N Satellites'

cGpsRawUnits =

'm' 'm' 'm' 'm/s' 'm/s' 'm/s' 's'

ans =

1

fx >>

```