



1 – SmartyCam 3 firmware updating

This user manual explains how to update SmartyCam 3 cameras firmware. At present the product range includes SmartyCam 3 Sport only but other SmartyCam 3 are coming soon.

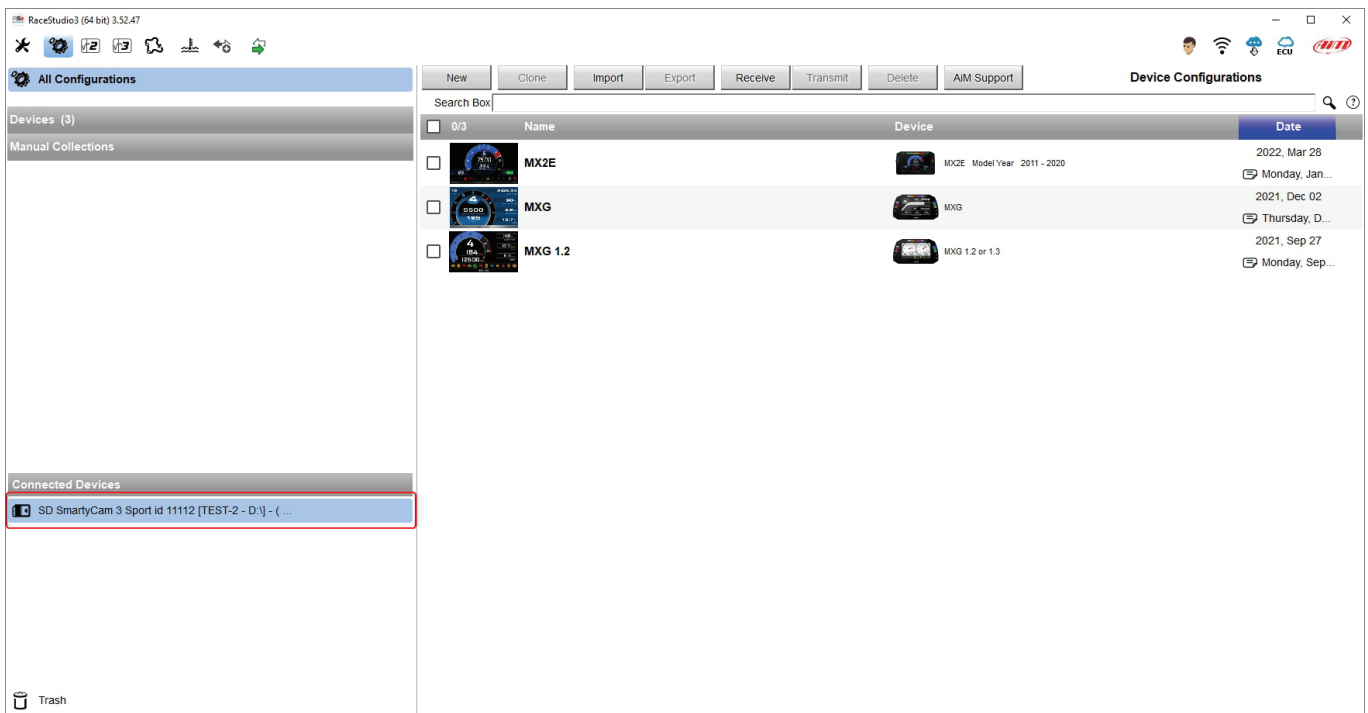
1.1 – Updating SmartyCam 3 Sport

SmartyCam 3 Sport can only be updated through the memory Card. The camera can support up to 2TB cards.

Please note: if you are using a new card it is necessary to insert it in SmartyCam 3 Sport slot before using it so that Race Studio 3 can identify it as a SmartyCam 3 Sport; once this done insert the memory card in your PC slot.

To update SmartyCam 3 Sport firmware:

- Run Race Studio 3 software: the card is shown bottom left of the software view





- Top right of the software view you find a keyboard featuring different icons; if any update is available it is indicated by an arrow on the cloud icon as shown here below: click the icon.



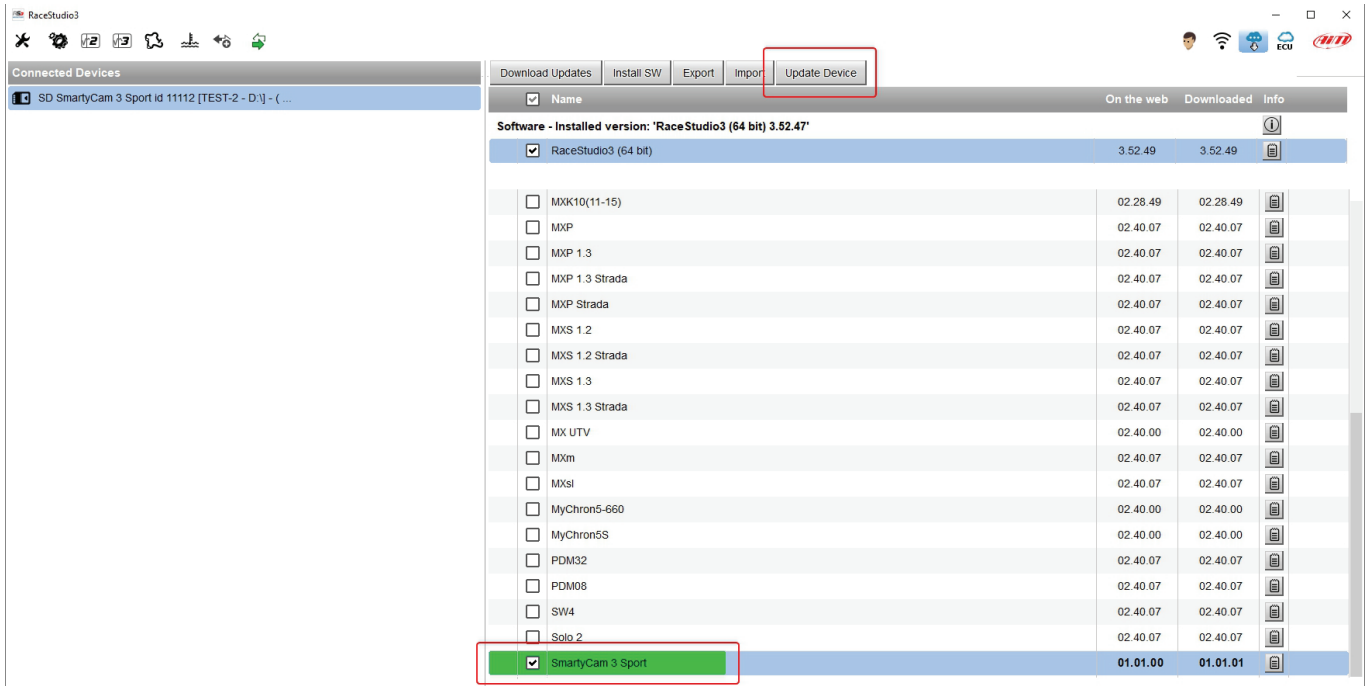
- the software enters available updates page and all available updates are shown;
- enable the checkbox corresponding to SmartyCam 3 Sport and click "Download Updates"

The screenshot shows the RaceStudio3 (64 bit) 3.52.47 interface. The 'Download Updates' button is highlighted with a red box. Below it, a table lists available updates for various devices. The 'SmartyCam 3 Sport' update is selected with a checked checkbox.

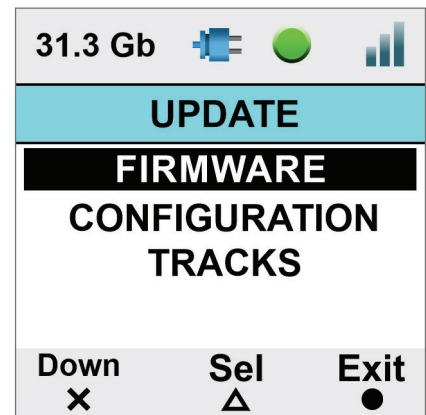
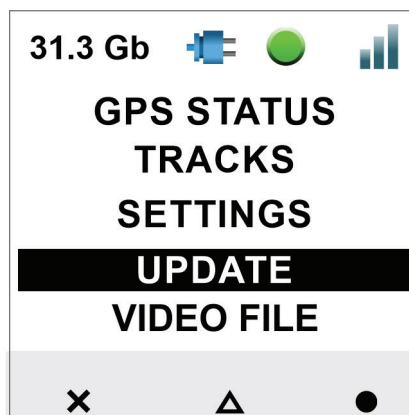
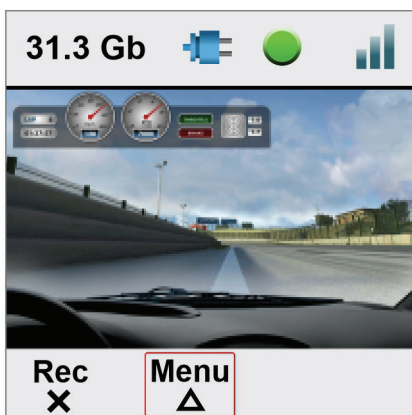
<input checked="" type="checkbox"/>	Name	On the web	Downloaded	Info
Software - Installed version: 'RaceStudio3 (64 bit) 3.52.47'				
<input checked="" type="checkbox"/>	RaceStudio3 (64 bit)	3.52.49	3.52.49	
<input type="checkbox"/>	MXK10(11-15)	02.28.49	02.28.49	
<input type="checkbox"/>	MXP	02.40.07	02.40.07	
<input type="checkbox"/>	MXP 1.3	02.40.07	02.40.07	
<input type="checkbox"/>	MXP 1.3 Strada	02.40.07	02.40.07	
<input type="checkbox"/>	MXP Strada	02.40.07	02.40.07	
<input type="checkbox"/>	MXS 1.2	02.40.07	02.40.07	
<input type="checkbox"/>	MXS 1.2 Strada	02.40.07	02.40.07	
<input type="checkbox"/>	MXS 1.3	02.40.07	02.40.07	
<input type="checkbox"/>	MXS 1.3 Strada	02.40.07	02.40.07	
<input type="checkbox"/>	MIX UTV	02.40.00	02.40.00	
<input type="checkbox"/>	MXm	02.40.07	02.40.07	
<input type="checkbox"/>	MXsi	02.40.07	02.40.07	
<input type="checkbox"/>	MyChron5-660	02.40.00	02.40.00	
<input type="checkbox"/>	MyChron5S	02.40.00	02.40.00	
<input type="checkbox"/>	PDM32	02.40.07	02.40.07	
<input type="checkbox"/>	PDM08	02.40.07	02.40.07	
<input type="checkbox"/>	SW4	02.40.07	02.40.07	
<input type="checkbox"/>	Solo 2	02.40.07	02.40.07	
<input checked="" type="checkbox"/>	SmartyCam 3 Sport	01.01.00	01.01.01	



- a green waiting bar appears on the firmware you are downloading
- wait until the waiting bar is completed
- click “update device” and Race Studio 3 loads the firmware on the memory card



- extract the card from the PC slot
- insert it in SmartyCam 3 Sport slot and switch the camera on
- follow this path MENU → UPDATE → FIRMWARE





- the camera shows the available firmware releases
- select the one you want to install and wait; in a few moments the camera will reboot and the new firmware is installed.

