

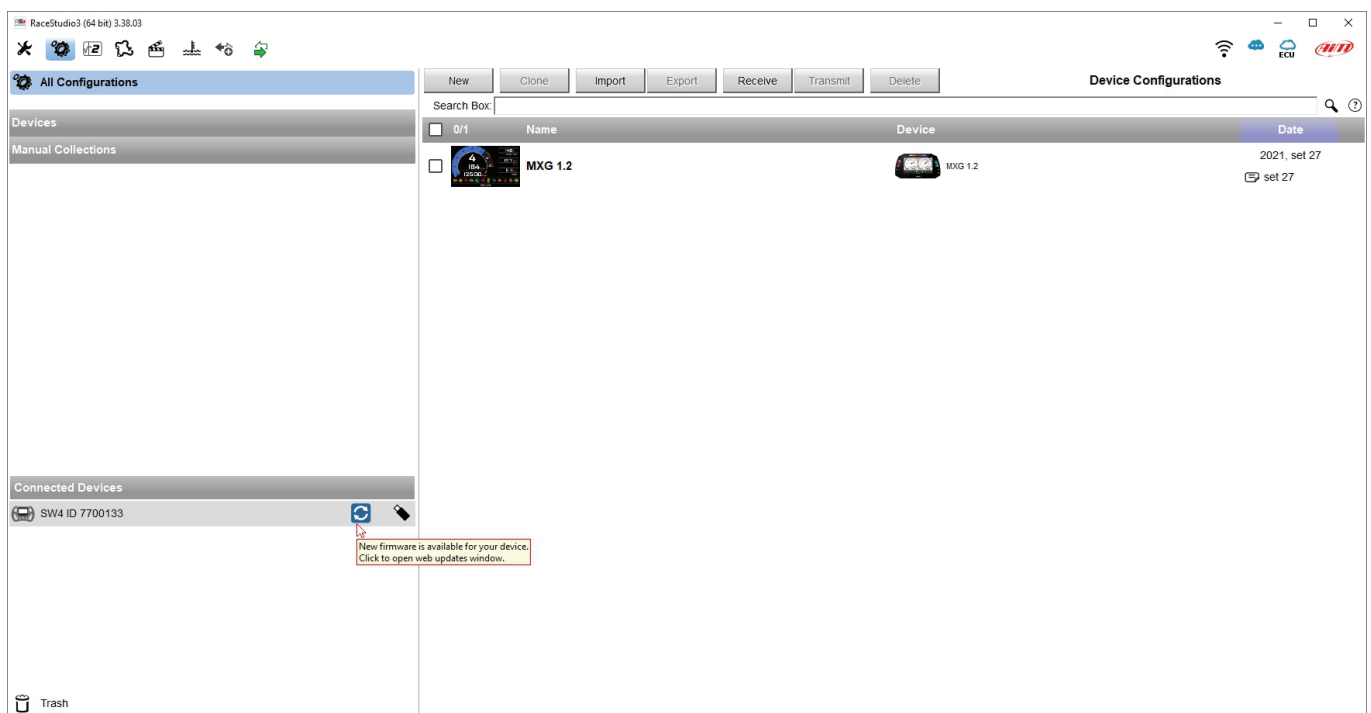
How to update AiM devices firmware from 2013 onwards

AiM devices firmware is updated through Race Studio 3 software, following these steps. The images of this user manual refer to SW4 but the procedure is the same for all AiM devices. The firmware update of master units brings update of any connected AiM expansion module too.

Please note: a connection to the Internet is needed.

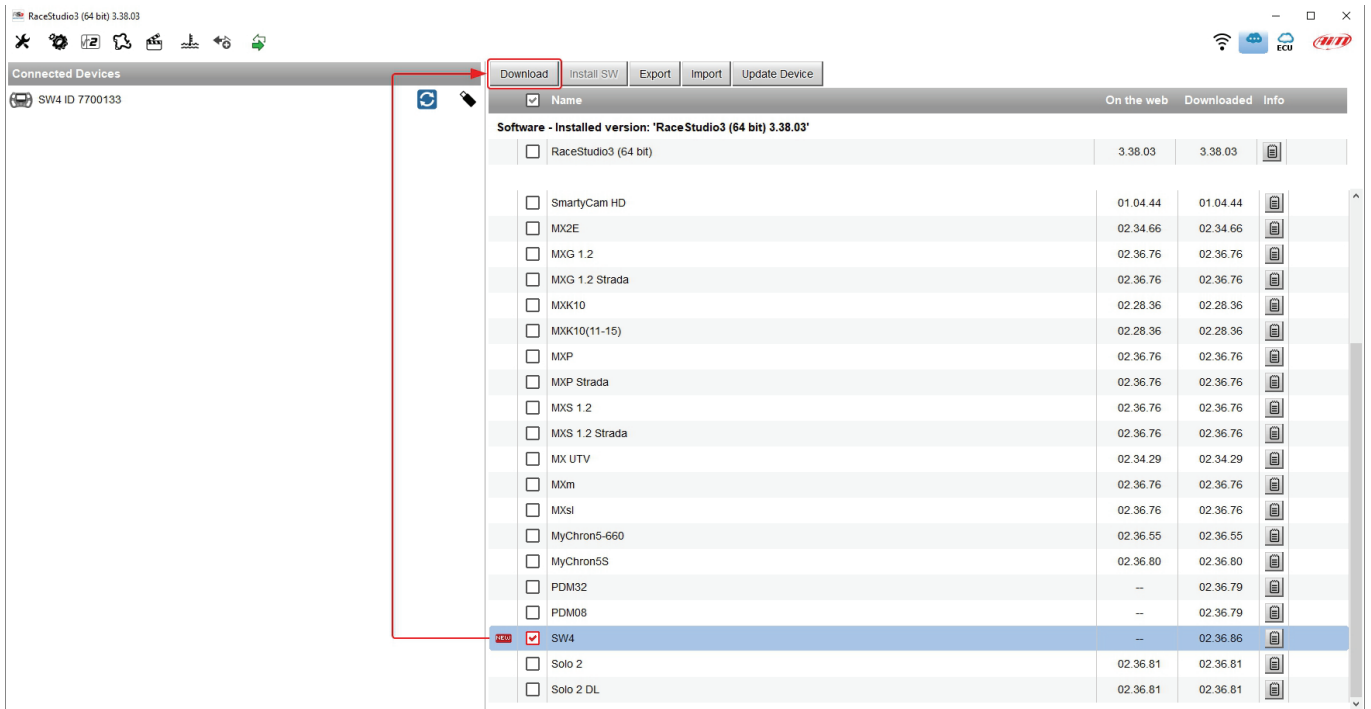
To update any AiM device firmware:

- run Race Studio 3 software
- connect your AiM device to the PC via Wi-Fi or via USB (SW4 is connected via USB in the image below)
- Race Studio 3 indicates that a new firmware is available for the connected device showing the related icon (🔄) right of it. Mousing over the device a tooltip appears indicating that a new firmware is available too.



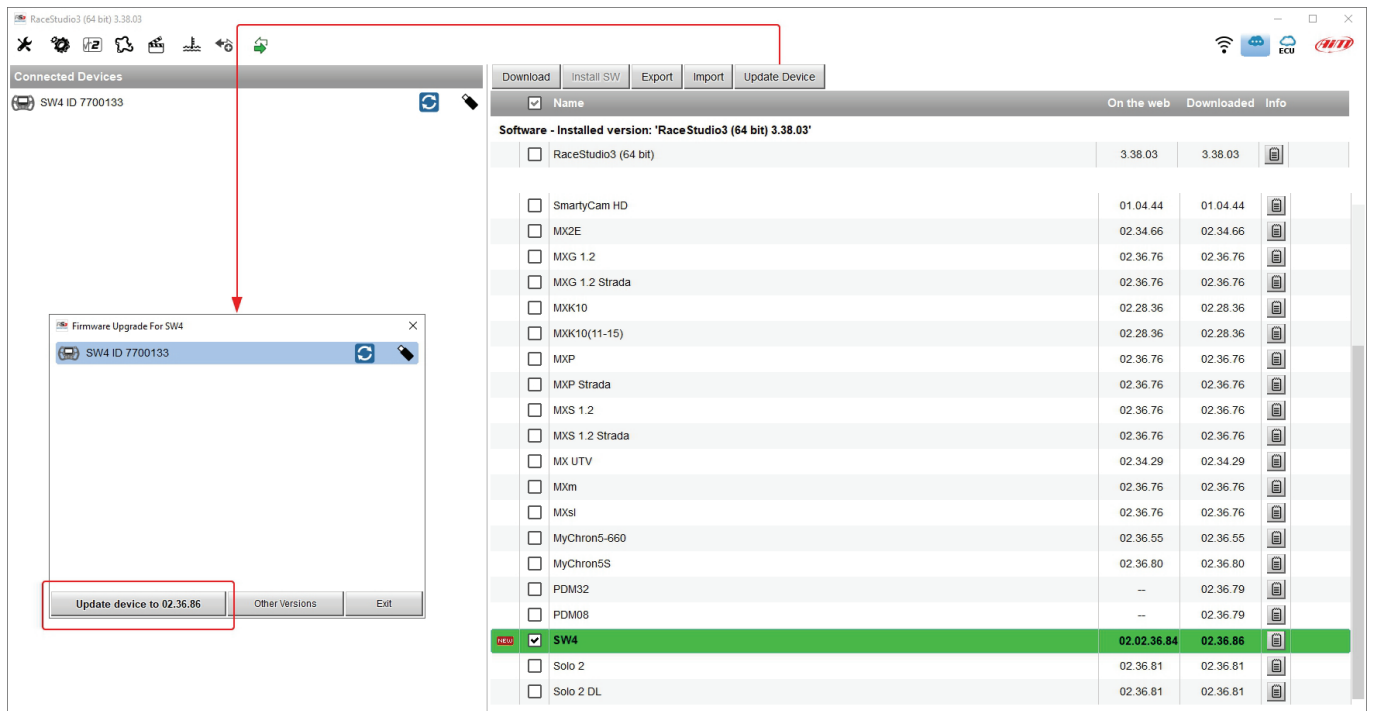


- Click on the firmware update icon and the software takes you directly to “Web Updates” page;
- if a new firmware is available, it is labelled “NEW” as shown here below
- select the related left checkbox and press “Download”
- the download starts and is shown by a progressive green bar



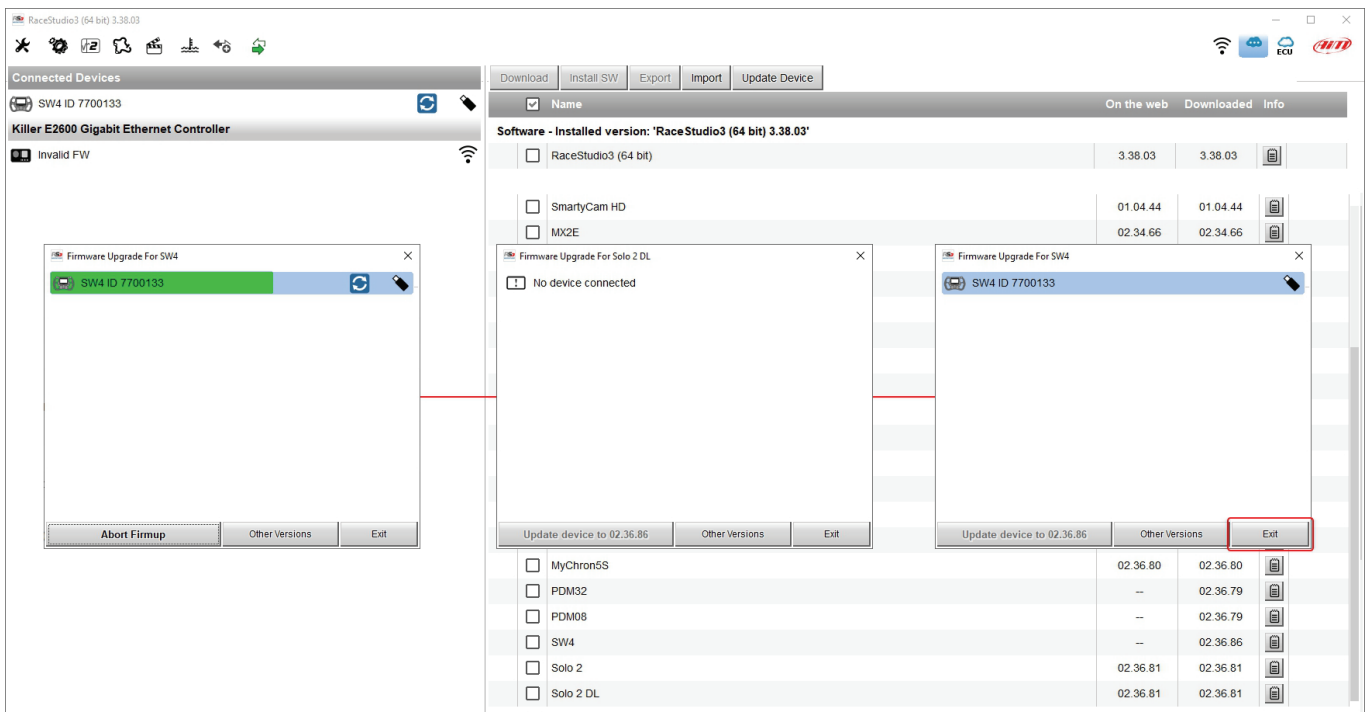
Once the firmware downloaded:

- click "Update Device"
- the related panel is prompted
- click "Update device to xx.xx.xx" (the latest available firmware – 02.36.86 in the image below)



Firmware upgrade starts and:

- a progressive green bar indicates that the firmware is being transferred to your AiM device
- the PC disconnects from AiM device
- AiM system displays a message: "FIRMWARE UPGRADE"
- a LED on the left starts blinking red
- at the end the system resets, comes back to its normal display mode and Race Studio 3 firmware upgrade panel shows the device row light blue again
- if AiM expansion modules are plugged in, these will be updated by the main logger after the reset; the operation will be notified with two blue LEDs blinking





To know the firmware versions running on your system:

- click "Device" icon on the top left keyboard
- select the connected device
- enable "Firmware" tab where all information concerning master device and its connected expansions are displayed

