

RS3

## Automatic page scrolling

---

**Question:**

How can I automatically scroll my display pages while driving, for example using my steering wheel pushbuttons, without using the device buttons?

**Answer:**

Usually, AiM devices are managed through the lateral pushbuttons, placed on the two display sides. In some cases, these pushbuttons cannot be easily reached by the driver, being tied to the seat, or pushbuttons are already present on the vehicle steering wheel, lastly there could be the needing to scroll pages automatically or to confirm the alarm reading by the driver.

In these cases, the "Trigger Commands" function of Race Studio 3 must be used, through which, when specific conditions verify, correspondent commands activate, as the automatic page changing, for example.

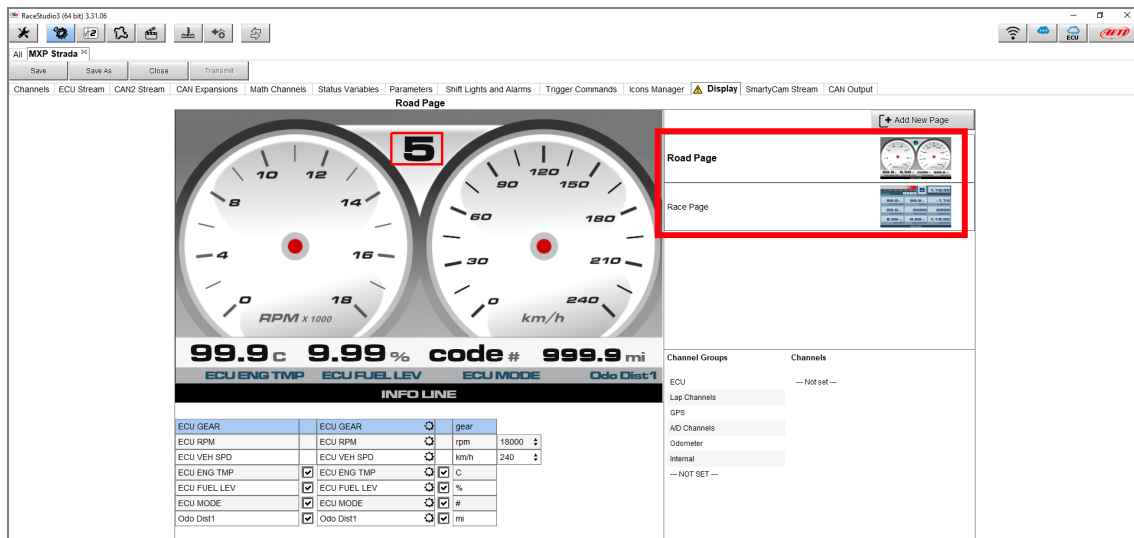
Before configuring trigger commands, input signals must be set, briefly listed below, that will be used as reference to manage commands:

- **"Channels" tab:** configuring the analog channels to which sensors are connected; if third-parties sensors are connected, they must be characterized from the "Custom Sensors" section.
- **"ECU Stream" and "CAN2 Stream" tab:** selecting the compatible communication protocols, to obtain channels from ECU and additional CAN modules.
- **"CAN Expansions" tab:** correctly identifying a connected expansion (i.e.: LCU-One CAN) and eventually setting the analog channels to which sensors are connected (i.e.: Channel Expansion).
- **"Math Channels" tab:** it is possible to apply mathematical operation to the existing channels of the configuration, in order to obtain additional ones.

For further details about configuration steps, it is recommended to refer to the Documentation – Products and FAQ sections of our website [www.aim-sportline.com](http://www.aim-sportline.com).

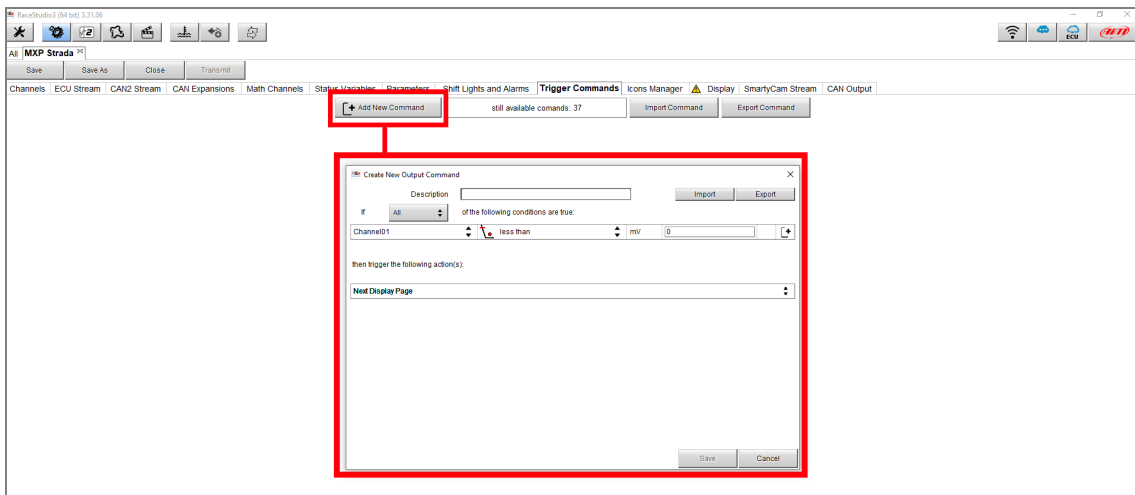
RS3

- Once these preliminary settings are done, proceed configuring the device pages from the "Display" tab: in the following example, assuming the installation is made on a road use vehicle, "Road" page (first one) and "Race" page (second one) have been created, that are used when road driving and during track days, respectively (red box; image below).



**RS3**

- Enter the “Trigger Commands” tab: to create a new trigger command, press “Add New Command” button (following image)



- After a name has been set, it is possible to choose one or more events that, if verified, cause the automatic display page changing.

To add/remove a condition, click the and buttons respectively.

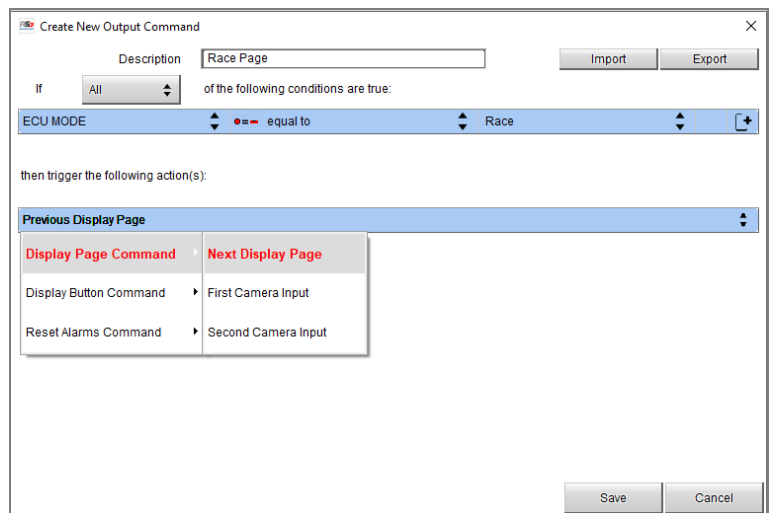
Pressing the “All” or “Any” button, it is possible to choose if the automatic display page changing must happen when all/ at least one of the conditions is verified.

Pressing “Import” and “Export” buttons, an existing trigger command can be imported/exported (.alrcc file format).

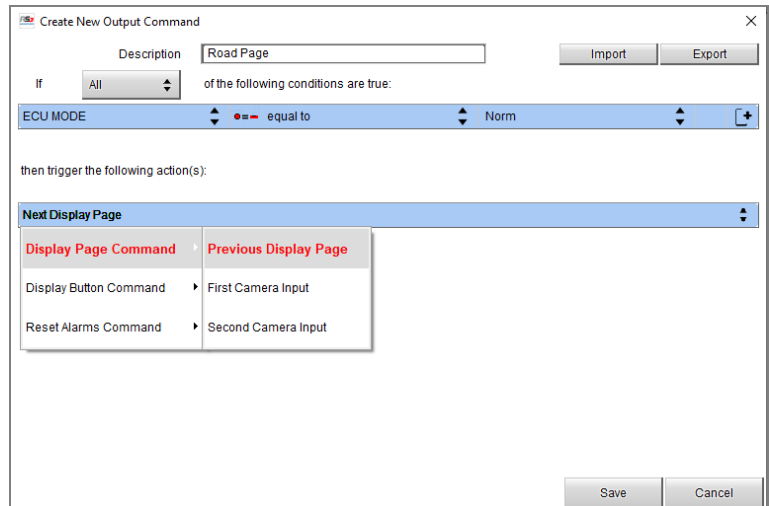
**RS3**

Referring to the case in example, two trigger commands have been created using "ECU MODE" channel (received by the ECU; following pictures), so to provoke each page displaying starting from the active engine map, the value of which can be modified through the vehicle steering wheel pushbuttons.

- Before starting the session, setting the engine map as "Race", the command automatically changes the display page, moving to the following one ("Next Display Page" command), that means the "Race page"

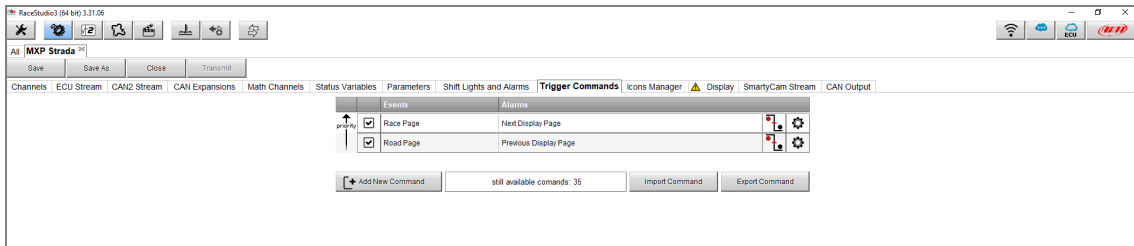


- At the end of the session, when the engine map is set as "Norm" again, the command provokes the previous page displaying ("Previous Display page" command), that means the "Road page"



**RS3**

Once these settings are confirmed, press “OK”: trigger commands will be included into the section main page list (following picture).



“Import Command” and “Export Command” buttons give the possibility to import/export an existing set of trigger commands (.tal1c file format).