

RS3

Display pages customization

Question:

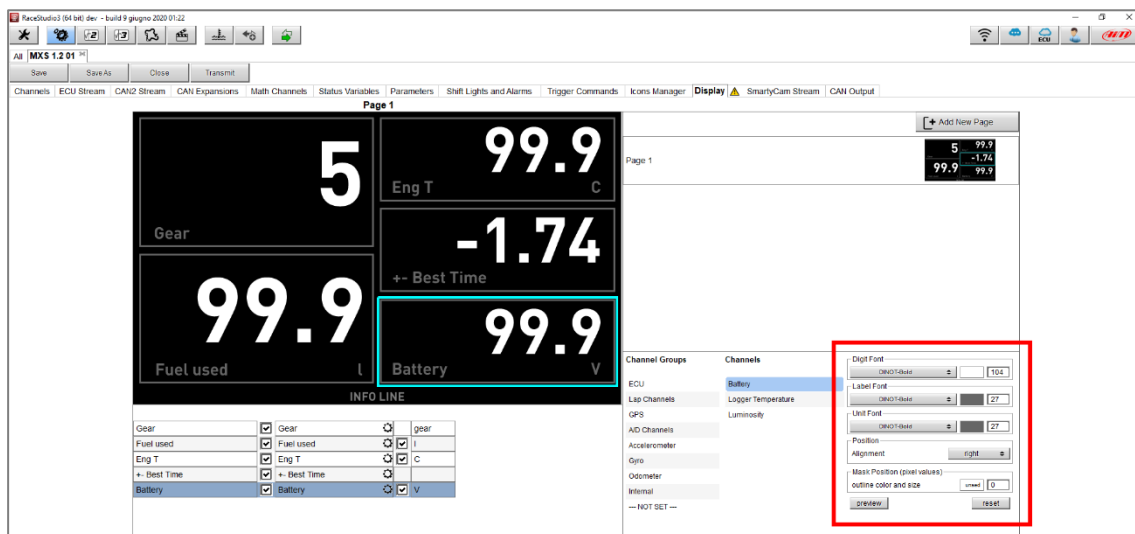
How can I customize my display pages so that I can have better references while driving?

Answer:

It is possible to customize display pages look from the Race Studio 3 "Display" tab of your device configuration, in the way explained below.

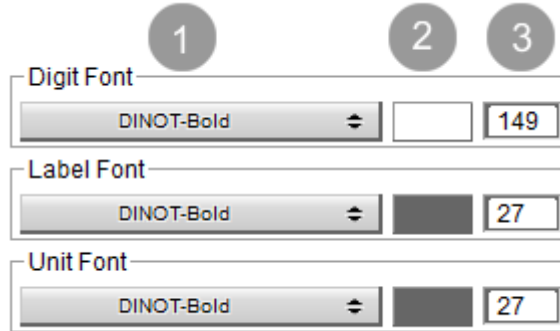
N.B.: following procedures are valid for AiM MXx 1.2 and MXx 1.2 Strada devices only.

- Run Race Studio 3, open your device configuration or create a new one and enter the "Display" tab.
- Choose one or more among the available page layouts and, after a configuration channel has been set for a specific field, it can be customized from its settings area (red square, following image):

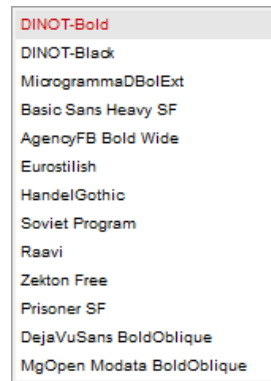


RS3

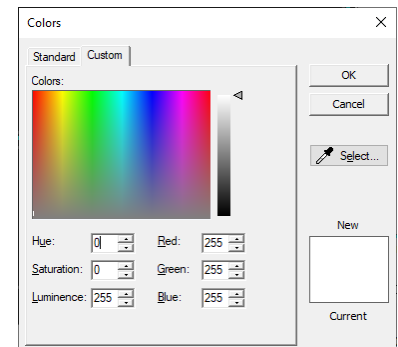
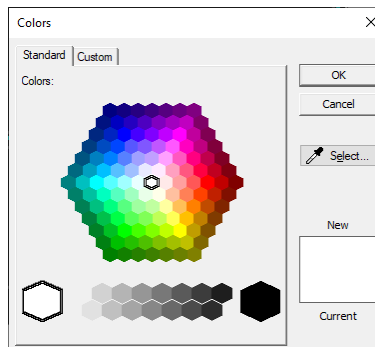
For each channel, Digit, Label and Unit Font **style (column 1;** following image), **color (column 2,)** and **dimension (column 3)** can be customized:



Style: pressing the button (1), a drop-down menu appears, from which it is possible to choose a font style among the available ones.



Color: pressing the color (2), it is possible to set a color selecting it from a predefined pattern ("Standard" tab; left picture) or choosing the color RGB values and additional properties ("Custom" tab; right picture)



Dimension: typing the dimension in each specific field (3; right image; red arrows)

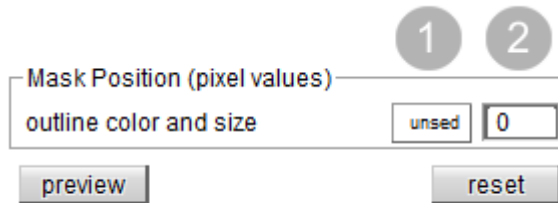


RS3

- **Position:** alignment can be chosen for the channel digit, inside the specific drop-down menu (following image).



- **Mask Position:** the page field outline can be customized, choosing a color clicking the proper square (**box 1**; following image) and a thickness, typing it in the specific field (**box 2**).



In the following example, two pages have been customized for road use (following left picture) and track use (following right picture) respectively.

