



Export data in different formats

Questions:

How can I export logged data from Race Studio 3 and RS2 Analysis?

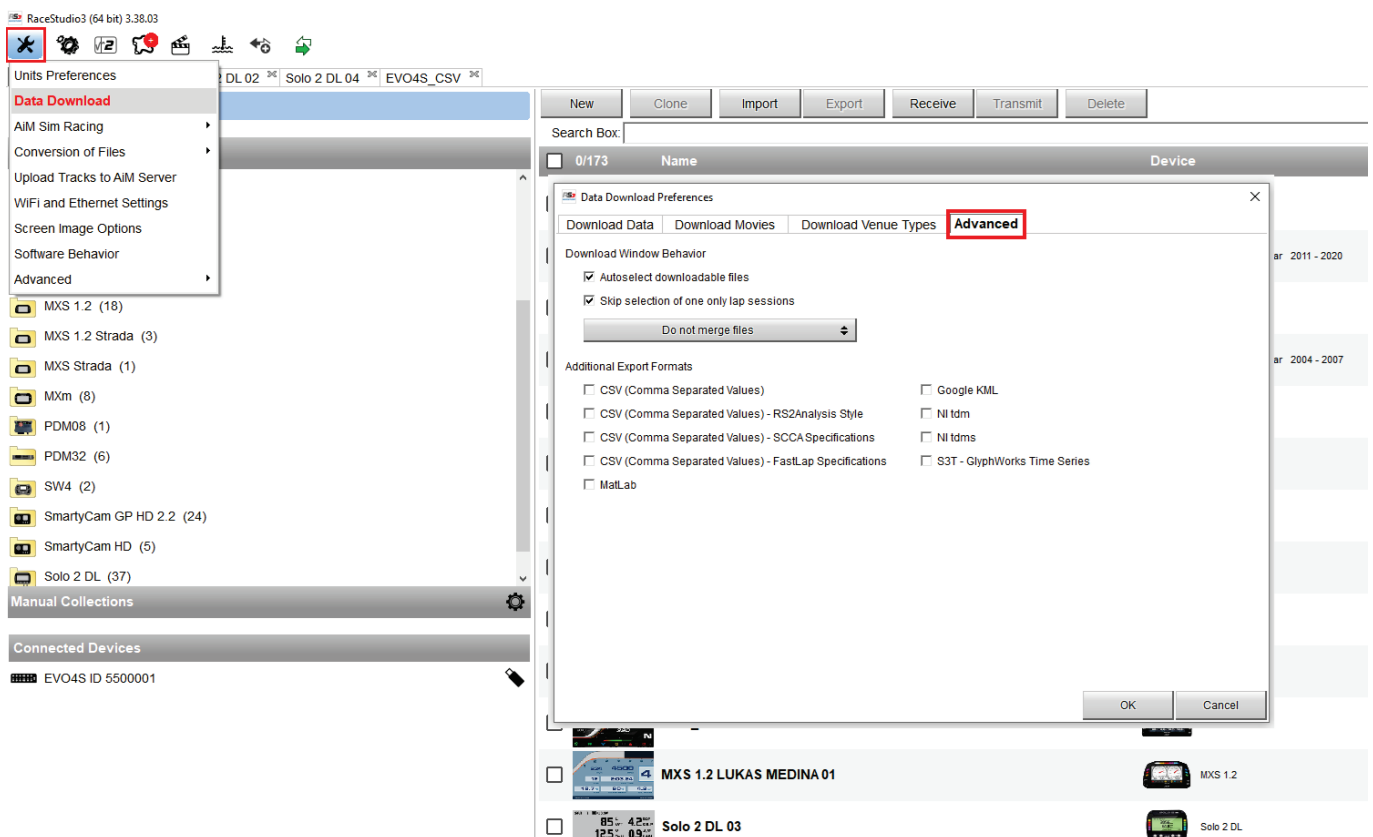
Answer:

This function can be performed both on Race Studio 3 during the data download and on RS2 Analysis, during the data analysis.

Export AiM data with Race Studio 3

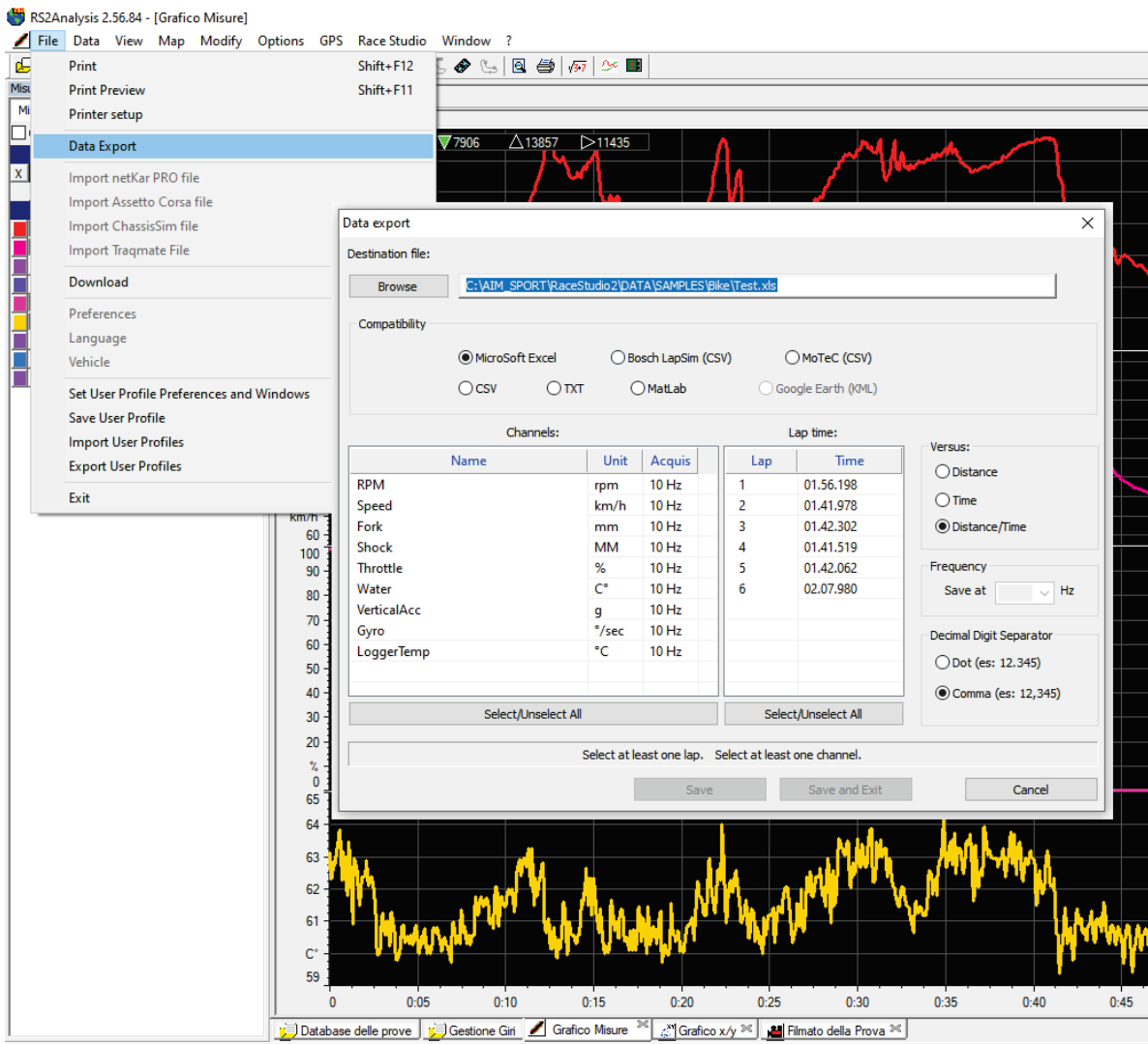
Enabling this function is very simple: open **Race Studio 3**, select **Preferences** (first icon on the top left corner) - **Data Download - Advanced**, tick the box relevant to the desired file format(s) and this will enable the automatic file export when data are downloaded from the device to the PC. This is a function that is permanently enabled and can only be disabled in this same window, removing the tick from the box.

The exported file will include all of the channels contained in the downloaded section.



Export AiM data with RS2 Analysis

Data can also be exported from RS2 Analysis. Once data have been downloaded to the PC, or are already available in the test database, these can be exported opening the test in RS2 Analysis – select **File** from the top menu bar – **Data Export** - and the following table appears.



Other than the file formats choice, it is also possible to narrow the export file to specific channels, laps and frequencies.