

AiM Infotech

MBE 992 V2 ECU

Release 1.01

---



ECU



This tutorial explains how to connect MBE 992\_V2 ECU to AiM devices.

# 1

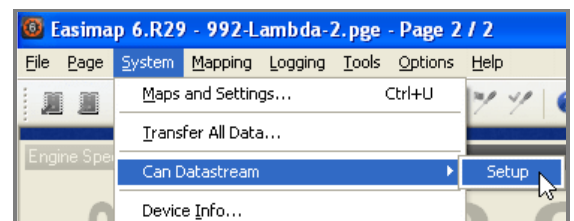
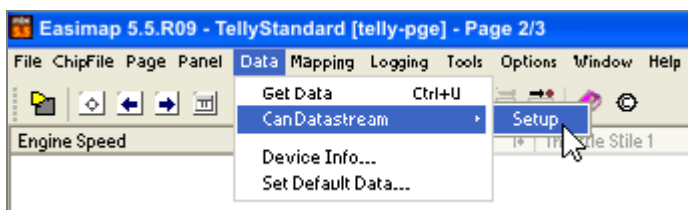
## Software setup

---

MBE 992\_V2 ECU comes with EasyMap software. For a correct communication with AiM devices set it up as follows:

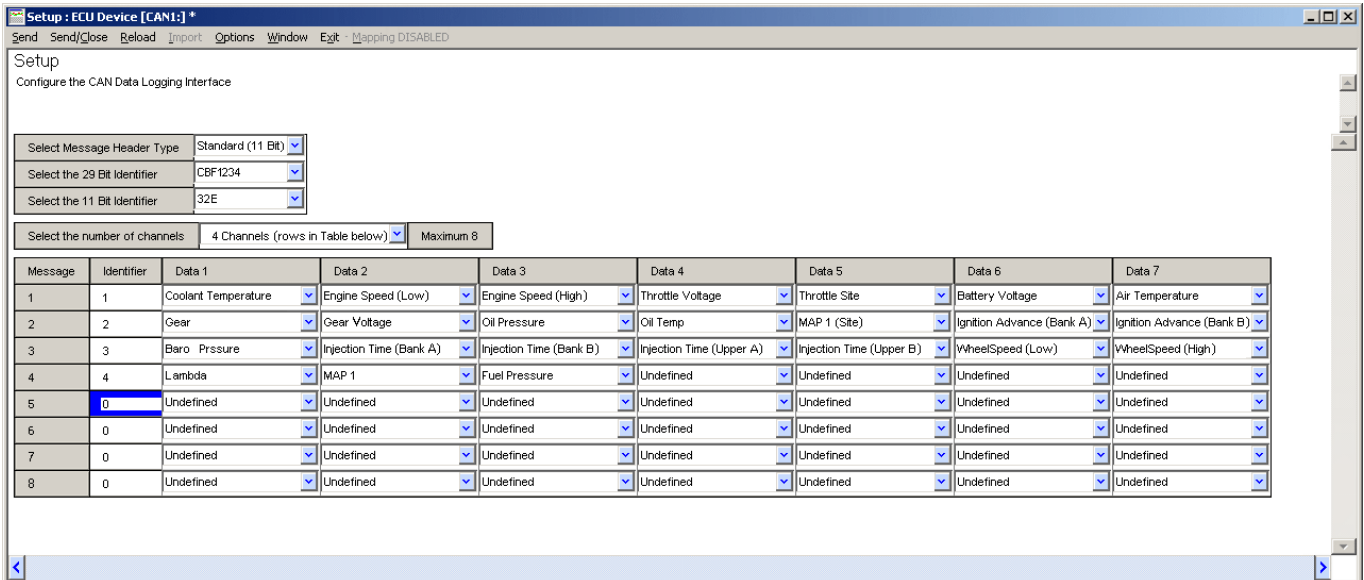
- Connect the ECU to your PC and power it.
- Run Easy Map and follow this path:
  - Data → CAN Datastream → Setup if you have EasyMap 5.5 release
  - System → Can Datastream → Setup if you have EasyMap 6 release

Here below you see images of EasyMap 5.5 – on the left – and EasyMap 6 – on the right.



- This way the software reads information coming from the ECU and opens a new window to configure the CAN communication;

- Parameters must be configured in the right sequence and with the right scaling; complete the table with the information suggested here below:



**Please note:** data logging configuration with EasiMap software is intended for expert users only. The software can of course be changed by MBE. Refer to [www.mbesystems.com](http://www.mbesystems.com) for further information.

- once all parameters configured press "Send" and choose "ECU Device" when requested; the configuration is stored in ECU memory
- close configuration window and quit the program
- before connecting MBE ECU to AiM device enable "Broadcast Mode" ensuring a nominally zero voltage (or open circuit) on fuel trim and ignition trim inputs.

## 2 Wiring connection

MBE 992\_V2 ECU features a bus communication protocol based on CAN on J2 36 pins front connector. Here below is connection table.

J2 36 Pins connector pin	Pin function	AiM cable
9	CAN High	CAN+
8	CAN Low	CAN-

## 3

# AiM device configuration

---

Before connecting the ECU to AiM device set this up using AiM Race Studio software. The parameters to select in the device configuration are:

- ECU manufacturer "MBE"
- ECU Model "992\_V2"

## 4

# Available channels

---

Channels received by AiM devices connected to "MBE" "992\_V2" protocol are:

<b>ID</b>	<b>CHANNEL NAME</b>	<b>FUNCTION</b>
ECU_1	MBE_RPM	RPM
ECU_2	MBE_ECT	Engine coolant temperature
ECU_3	MBE_THROTTLEVOLT	Throttle voltage
ECU_4	MBE_TPS	Throttle position sensor
ECU_5	MBE_BATTVOLT	Battery supply
ECU_6	MBE_AIRTEMP	Intake air temperature
ECU_7	MBE_GEAR	Engaged gear
ECU_8	MBE_GEARVOLT	Gear voltage
ECU_9	MBE_OIL_P	Oil pressure
ECU_10	MBE_OIL_T	Oil temperature
ECU_11	MBE_MAP1_SITE	Manifold air pressure 1 site
ECU_12	MBE_IGN_ADVANCE	Spark advance on ignition table
ECU_13	MBE_BARO_PRESS	Barometric pressure
ECU_14	MBE_INJ_BANK	Injection time on engine bank
ECU_15	MBE_INJ_UPPER	Injection time on upper engine bank
ECU_16	MBE_SPEED	Speed



ECU_17	MBE_THROTTLE_SITE	Throttle site
ECU_18	MBE_LAMBDA	Lambda value
ECU_19	MBE_MAP1	Manifold pressure bank 1
ECU_20	MBE_FUEL_P	Fuel pressure