

AiM InfoTech

HYUNDAI
I30N TCR
from 2017

Release 1.00



ECU



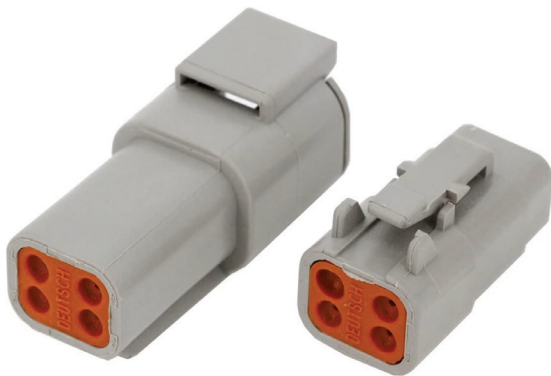
1 Models and years

This document explains how to connect AiM devices to the vehicle CAN data stream.
Supported models and years are:

- Hyundai Motorsport i30N TCR from 2017

2 Wiring connection

The ECU driver developed to communicate with this vehicle, is accessible through the **Spare CAN1** port, a Deutsch DTM04-4P connector located between the battery relay and the chassis ground.



DTM04-4P Pin	Pin function	AiM cable
1	+Vb 12V	+Vb
2	GND	GND
3	CAN High	CAN +
4	CAN Low	CAN -

It is strongly recommended to refer to a skilled technician to perform this kind of installation.

Before connecting the power supply, check with the car manufacturer the current flow (Ampere) the power line can deliver.

3 Race Studio configuration



Before connecting the AiM device to the CAN bus, set all functions using AiM software Race Studio. The parameters to set in the device configuration are:

- ECU manufacturer: **HYUNDAI**
- ECU Model: **I30N TCR** (Only RS3)

4 “HYUNDAI – I30N TCR” Protocol

Channels received by AiM devices configured with "HYUNDAI – I30N TCR" protocol are:

CHANNEL NAME	FUNCTION
RPM	RPM
Gear Position	Engaged gear
CarSpeed	Vehicle speed
pBrakeF	Front brake pressure
pBrakeR	Rear brake pressure
rPedal	Throttle pedal position
pClutch	Clutch pressure
Steering Angle	Steering wheel angle

Technical note: not all data channels outlined in the ECU template are validated for each manufacturer's model or variant; some of the outlined channels are model and year specific, and therefore may not be applicable.