

AiM Infotech

Configuration  
with Race Studio3  
of car/bike/kart  
Water temperature  
thermocouple

Release 1.00

---



**RS3**  
RACESTUDIO



# 1

## Introduction

---

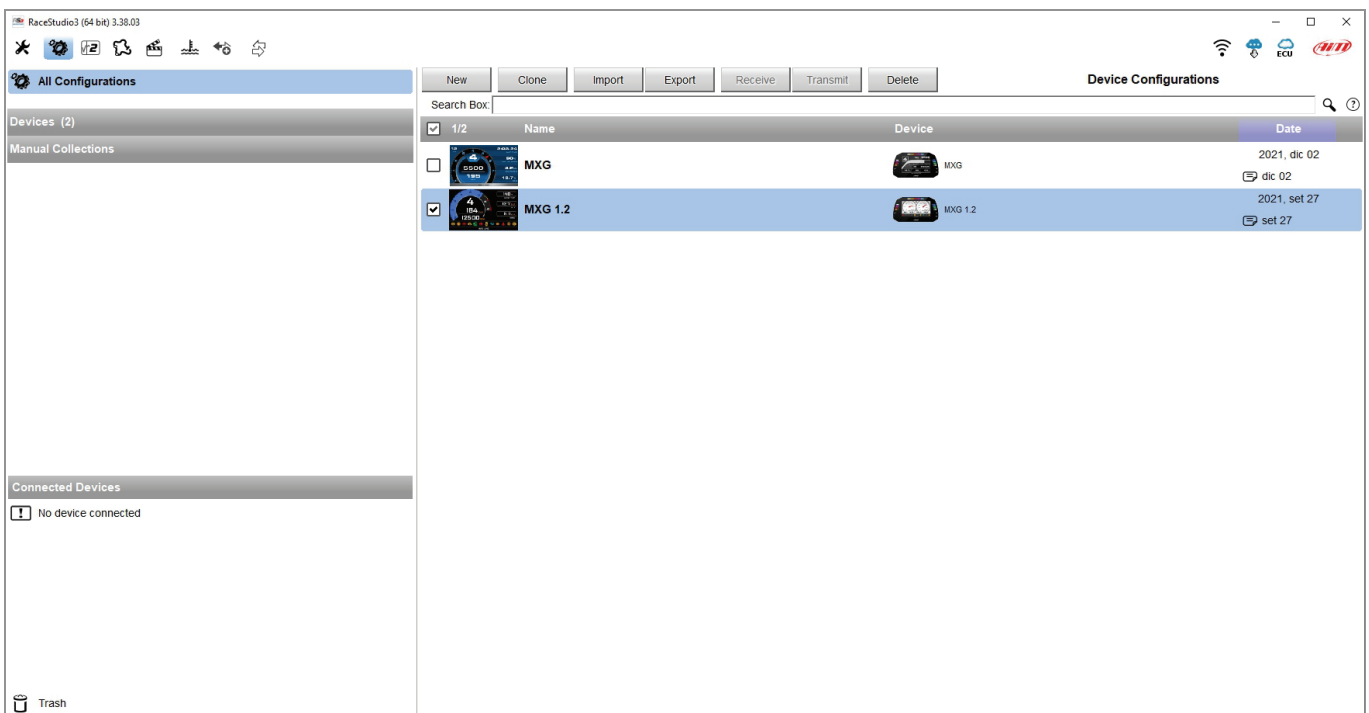
When the cylinder head thermocouple is physically connected to one channel of AiM device it is necessary to load it in the related configuration. In this datasheet it is loaded using **Race Studio 3** software.

# 2

## Race Studio 3 configuration

---

To load the sensor in the device configuration run the software and select the configuration where to load it on (MXG 1.2 in the example below):



The software enters "Channels" layer: select the channel where to set the sensor on and fill in the panel that is prompted.

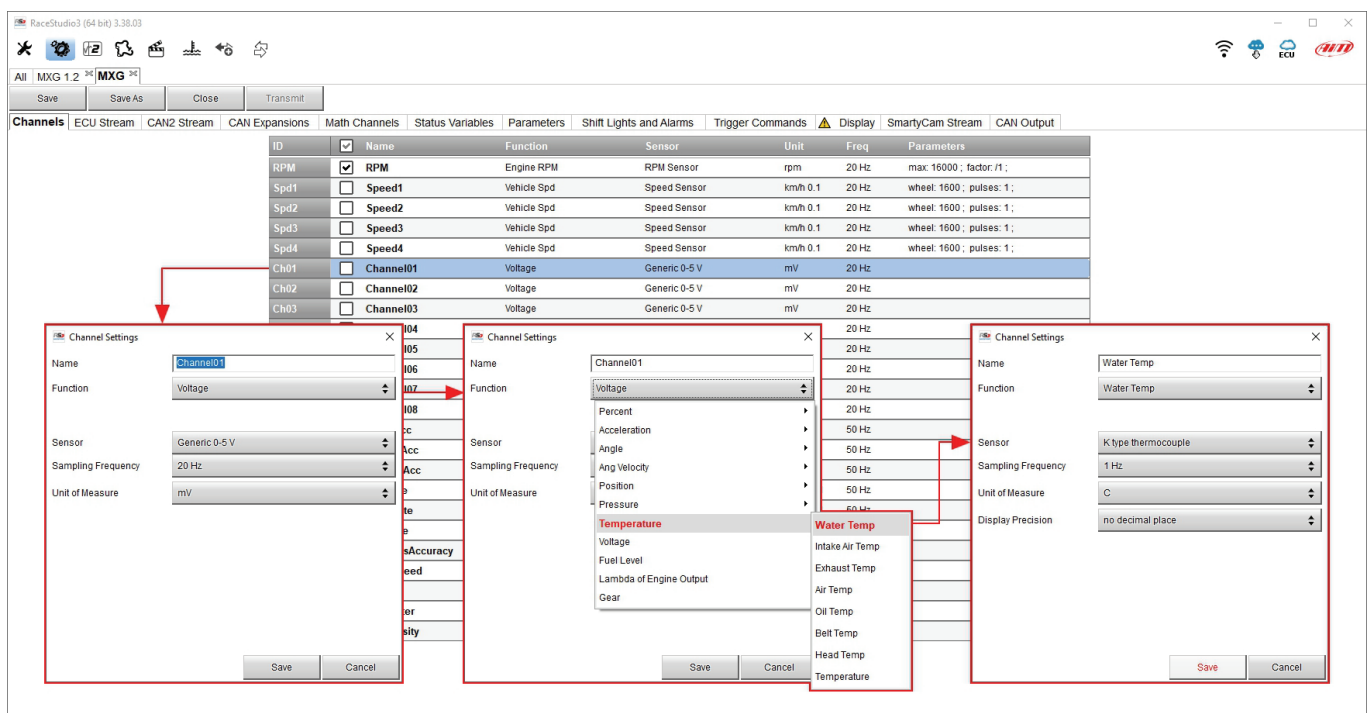
**Please note:** different AiM loggers have different channels management; this is why channels setting panel is different according to the device configuration you are loading the sensor in.

AiM devices that manage the channels only as **analog** are:

- SW4
- EVO5
- EVO4S
- MXL2/ MXG/MXS/MXS Strada
- MXm
- MXK10 Gen4
- MXK10 Gen5

To configure the sensor:

- click the channel you want to set the sensor on
- "Channel setting" panel is prompted: select "Temperature → Water Temp" function
- the software sets automatically on: "K type thermocouple"
- press "Save"



AiM devices that manages channels both as **analog and as digital** are:

- MX2E
- MXS 1.2/MXP/MXG 1.2
- MXS 1.2 Strada/MXP Strada/MXG 1.2 Strada
- MXL2/ MXG/MXS/MXS Strada
- MXsl

To configure the temperature sensor:

- click the channel you want to set the sensor on
- "Channel setting" panel is prompted: select "Analog" management
- select "Temperature -> Water Temp" function
- the software sets automatically on "K type thermocouple"
- press "Save"

