

DragOn-QMAn 1.01.02 – Upgrades

USB Driver Setup

- USB driver certification for Windows 7 32/64 bit, Windows XP and Windows Vista 32/64 bit: no more Windows alert that driver installation might damage the PC

DragOn-QMAAn 1.01.00 – Upgrades

DragOn

- Works on Windows Vista 64 bit
- Updates of ECU drivers
- Fixed bugs in gear potentiometer calibration

QMAAn

- Works on Windows Vista 64 bit
- Management of a new hardware board on MyChron4
- Bugs correction on Option -> Gearing Utility

QMAAn 1.00.08 – Upgrades

- Added management for a different vehicle (scooter) and a different distance base (150 meters)
- Fixed bugs while opening and importing GPS data for M4-660, MXL-QM and EVO3-QM
- Fixed bug in the properties window (comments couldn't be written on two lines)
- Fixed bug in the measure list population

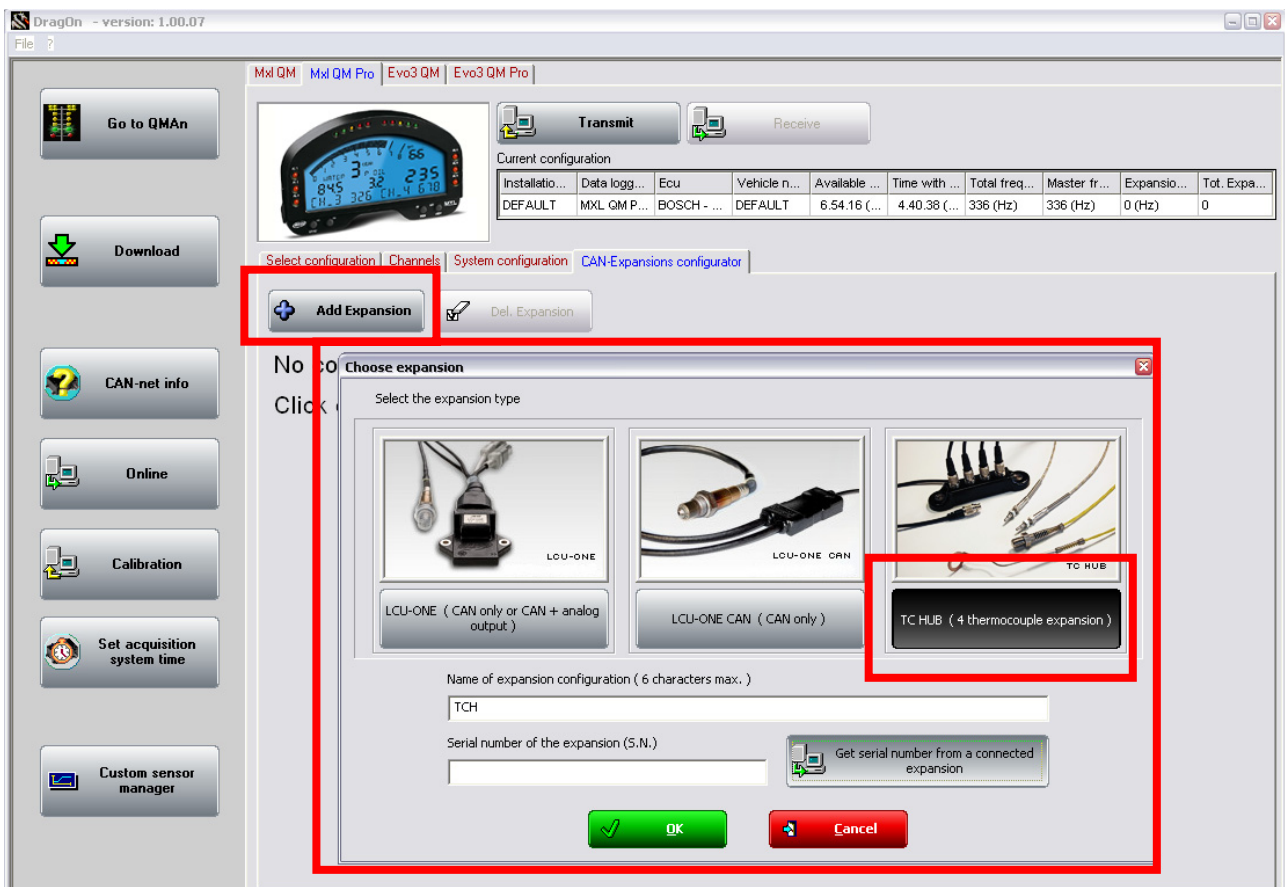
DragOn 1.00.07 – Upgrades

Managing of new TC Hub expansion.

Now it is possible to configure also the new TC Hub expansion to manage 4 additional thermocouples.

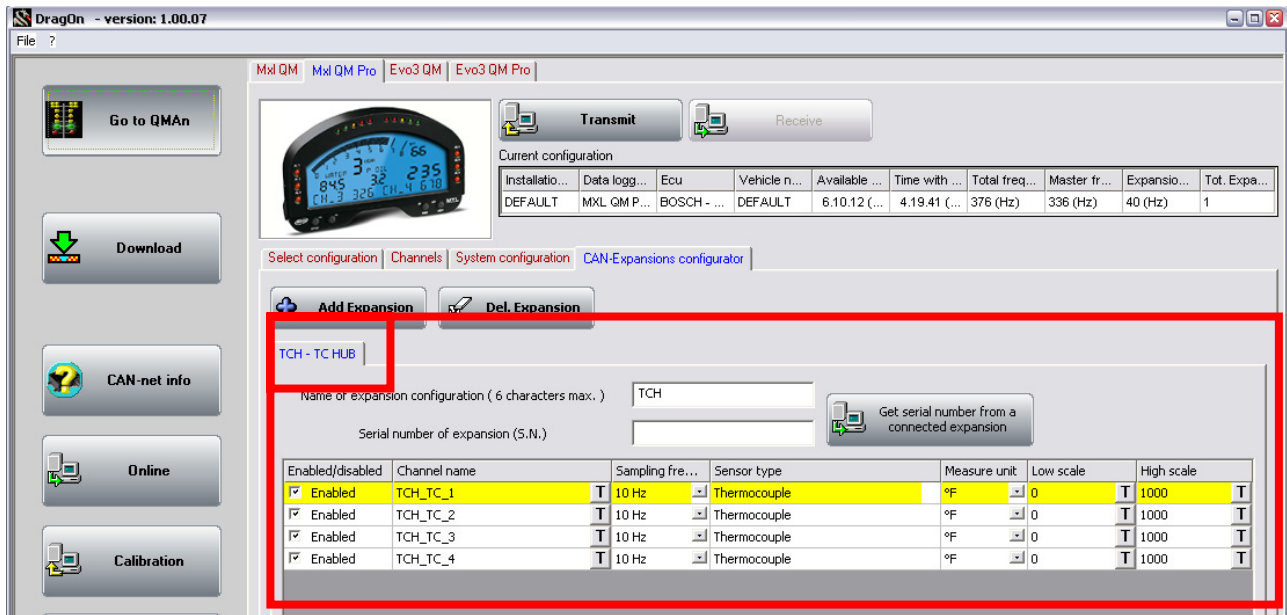
To configure it click on “CAN-Expansions configurator” tab, then click on “Add expansion” button and the “Choose expansion” window appears.

From now on this is the procedure to manage all the CAN expansions as Lambda controller too.



In this window click on “TC HUB (4 thermocouples expansion)” button, edit a name for this new configuration or leave the default one, set the serial number of the corresponding expansion (getting it from a connected expansion or directly typing it), then click on “OK” button and a new tab appears titled with the new configuration name followed by the type of expansion. (in the figure it is “TCH – TC HUB”).

In this other window you can change the configuration name, change the serial number of the corresponding expansion (getting it from a connected expansion too) and configure the TC HUB channels you want use.



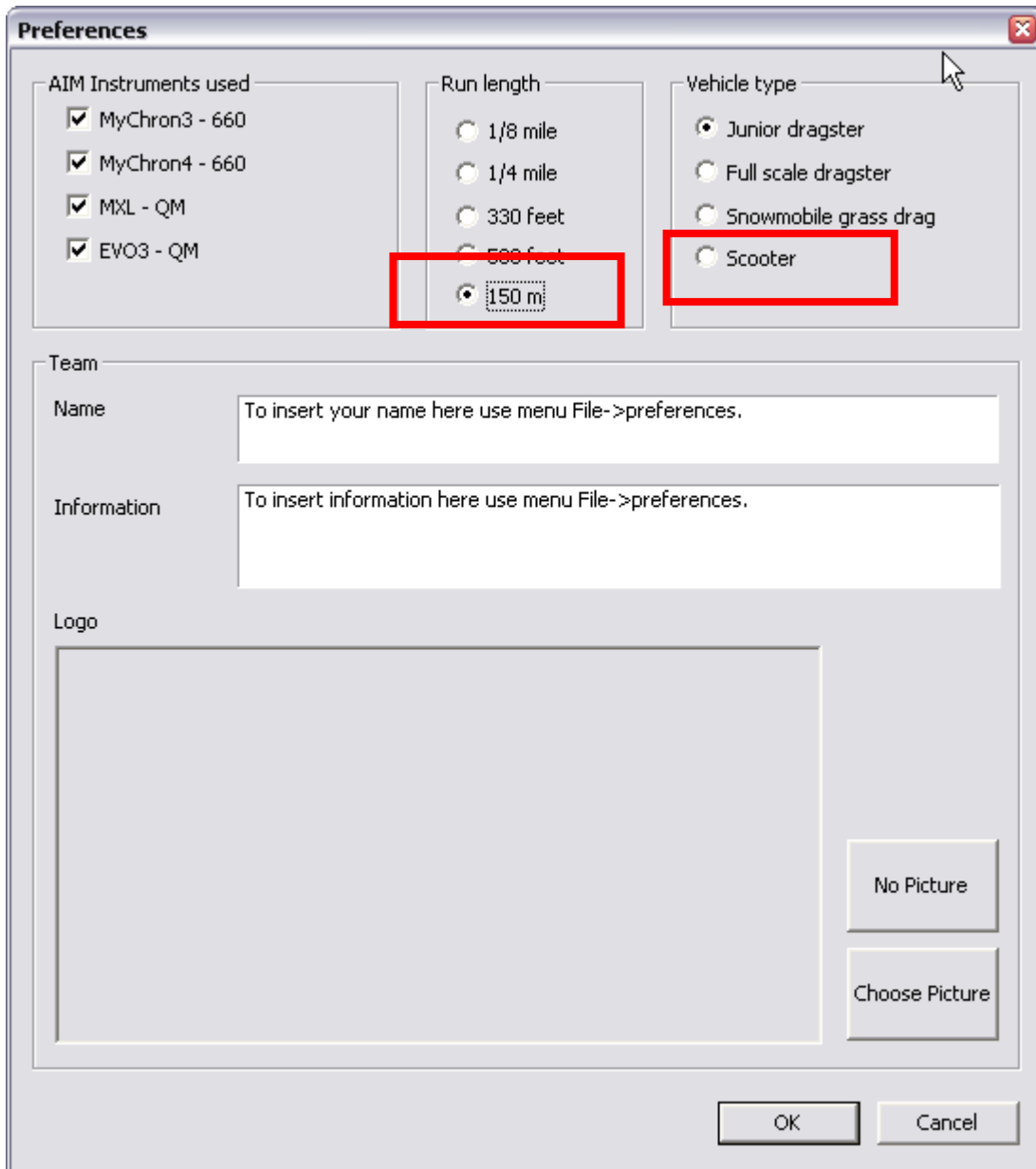
Downloading from M4 660 Europe version.

From now you can manage data also from Europe version of M4 660.

QMAN 1.00.07 – Upgrades

Added support for european races on 150 meters base with scooters.

Click on "File / Preferences" menu voice to open " " window to see the new possibilities.



Fixed bugs

Fixed crash while opening drk files including GPS data.

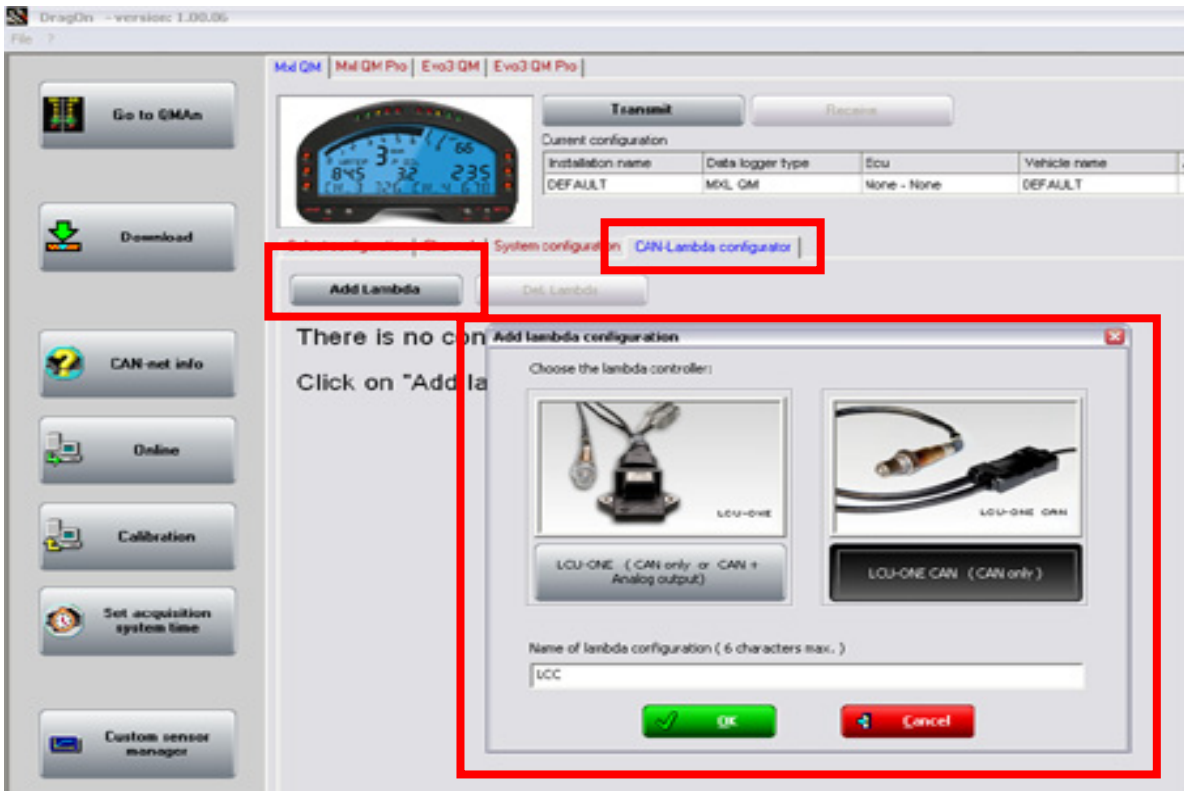
Fixed "Wrong math channel insertion" bug while opening a drk file.

Fixed bug that prevented the display of the second run loaded from a M3-660.

DragOn 1.00.06 – Upgrades

Managing of new LCU-ONE CAN

To configure new LCU-ONE CAN expansions click on “CAN Lambds configurator” tab, then click on “Add Lambda” button and the “Add lambda configuration” window appears.

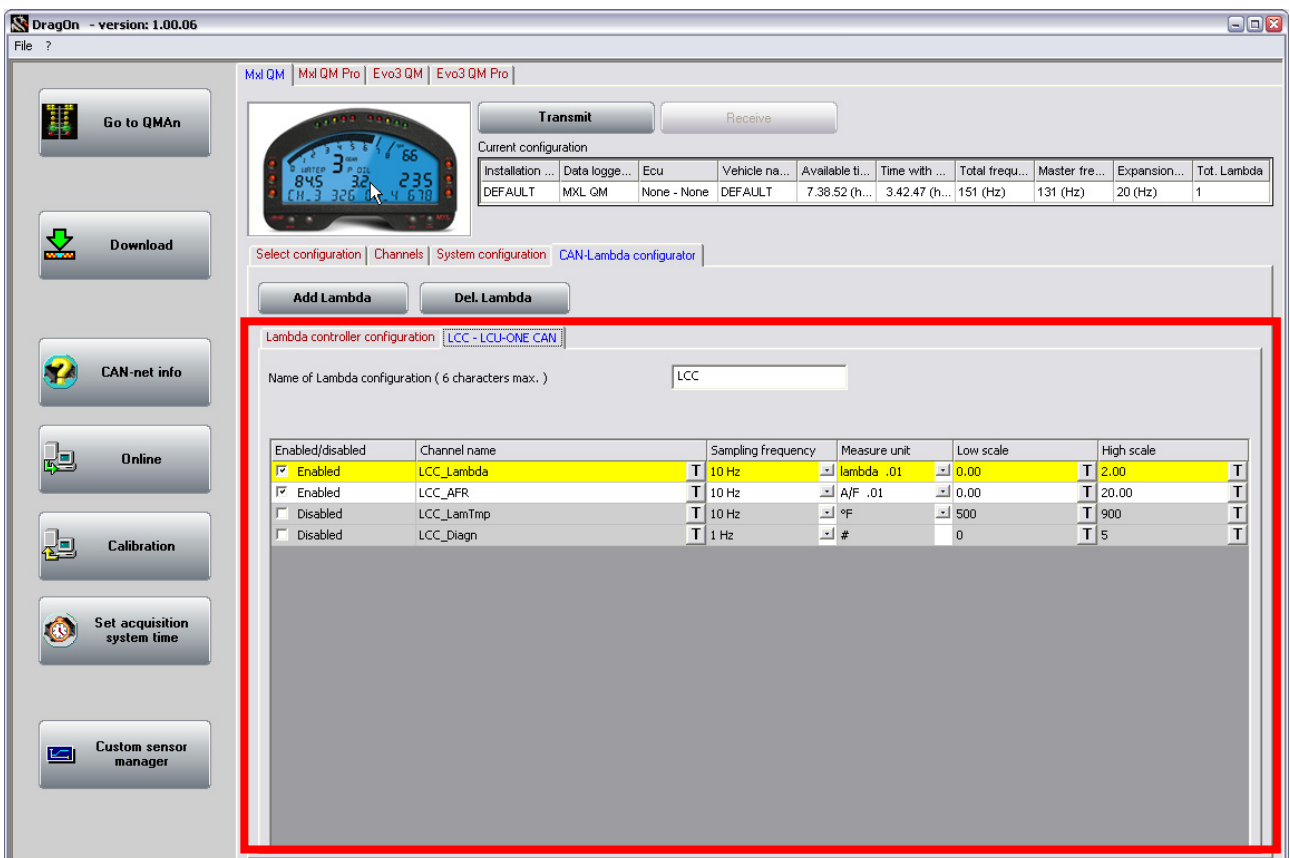
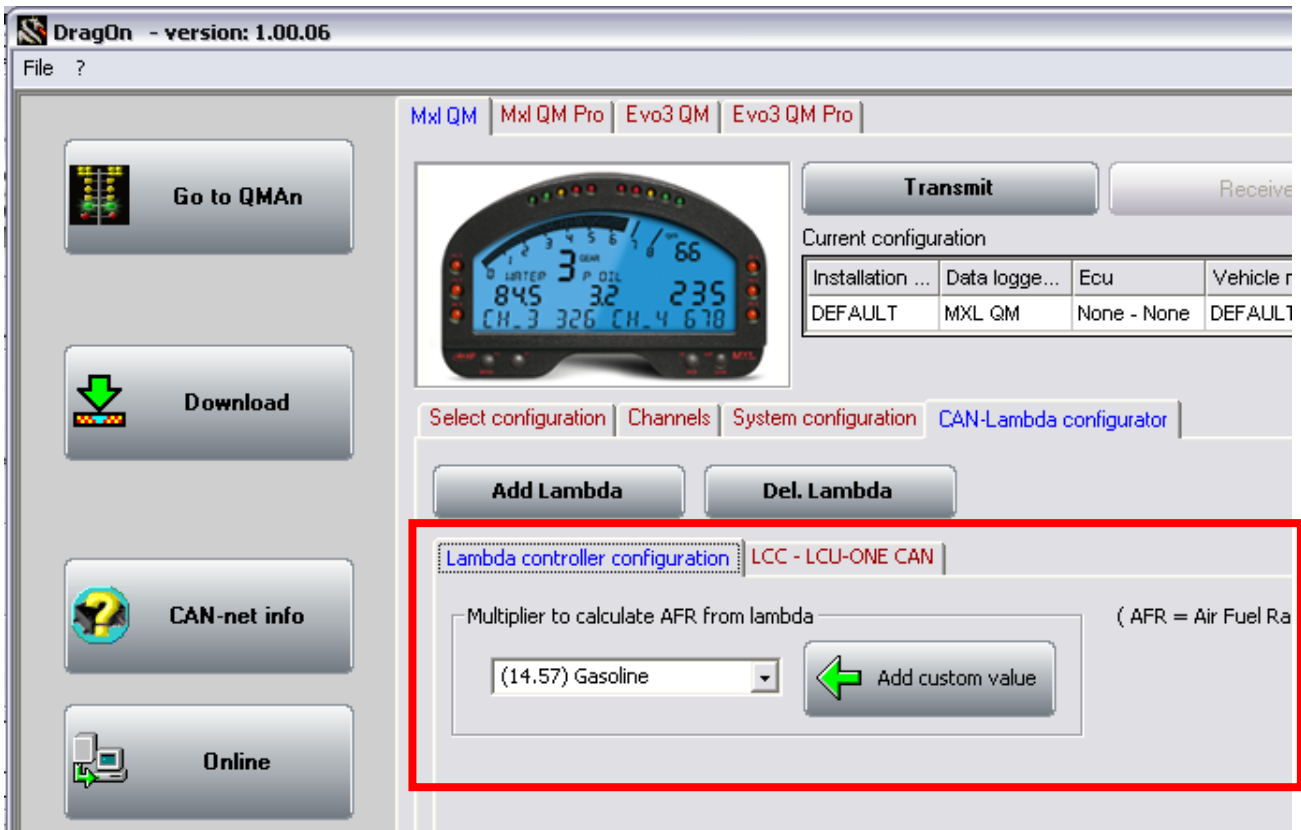


In this window click on “LCU-ONE CAN (CAN only)” button to select the new LCU, edit a name for this new configuration or leave the default one, then click on “OK” button and new tabs appear.

In the tab “Lambda controller configuration” you can choose the “Multiplier to calculate AFR from lambda”, this depends on used fuel and is the same for all LCU of selected configuration.

Another tab appears labelled with the LCU configuration name and the type of expansion (in the figure it is “LCC – LCU-ONE CAN”).

In this window you can change the LCU configuration name and you can configure the LCU channels you want use.



QMAAn 1.00.06 – Upgrades

PREFERENCES / STARTUP

The preferences dialog allows now to choose the Gauge Type in order for the QMAAn to show or hide the configuration icon (M4-660 doesn't need any configuration, while MXL-QM and EVO3-QM need it).

Preferences

AIM Instruments used

- MyChron3 - 660
- MyChron4 - 660
- MXL - QM
- EVO3 - QM

Run length

- 330 feet
- 1/8 mile
- 1/4 mile
- 500 feet

Vehicle type

- Junior dragster
- Full scale dragster
- Snowmobile grass drag

Team

Name

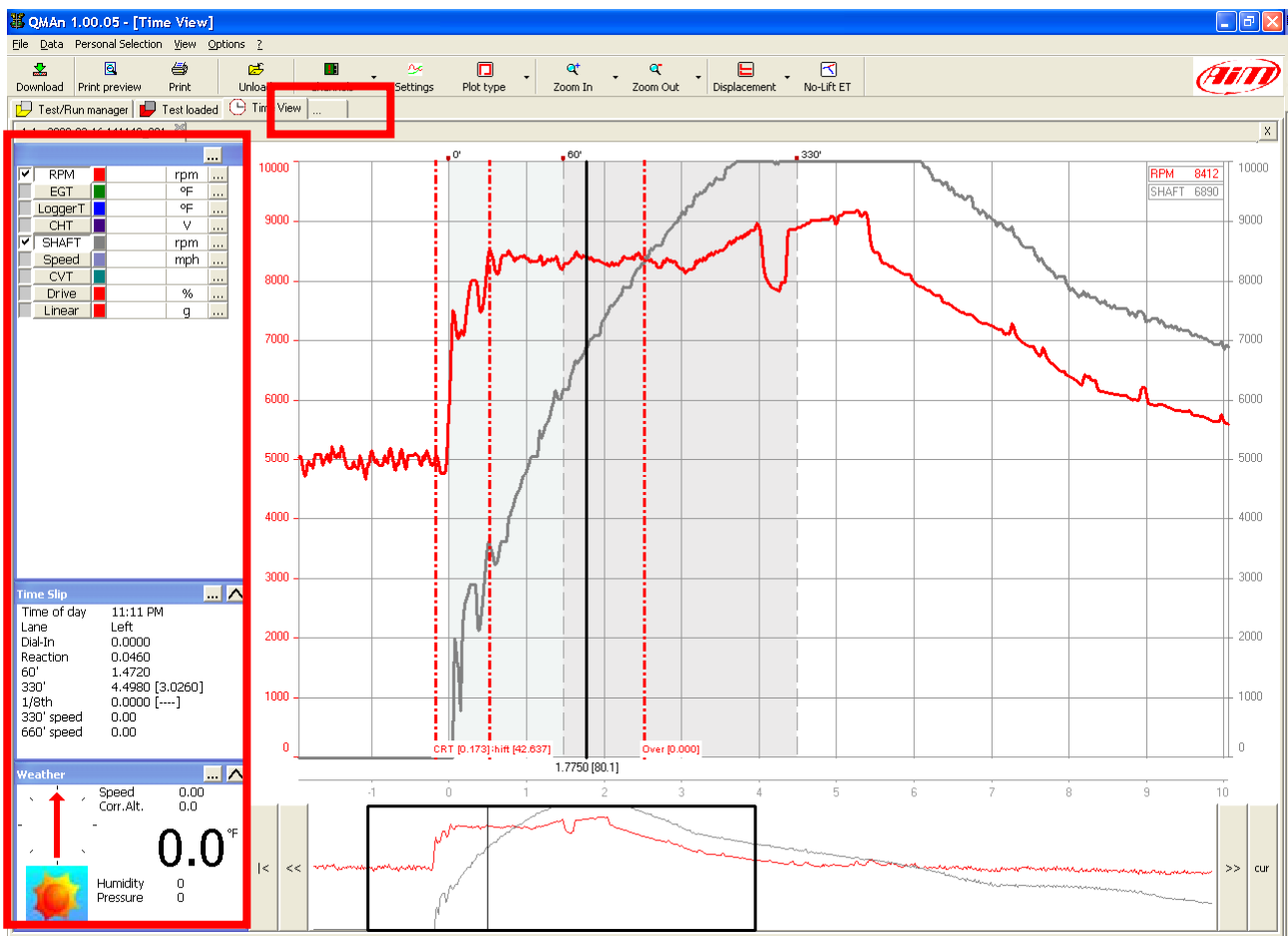
Information

Logo

TIME VIEW

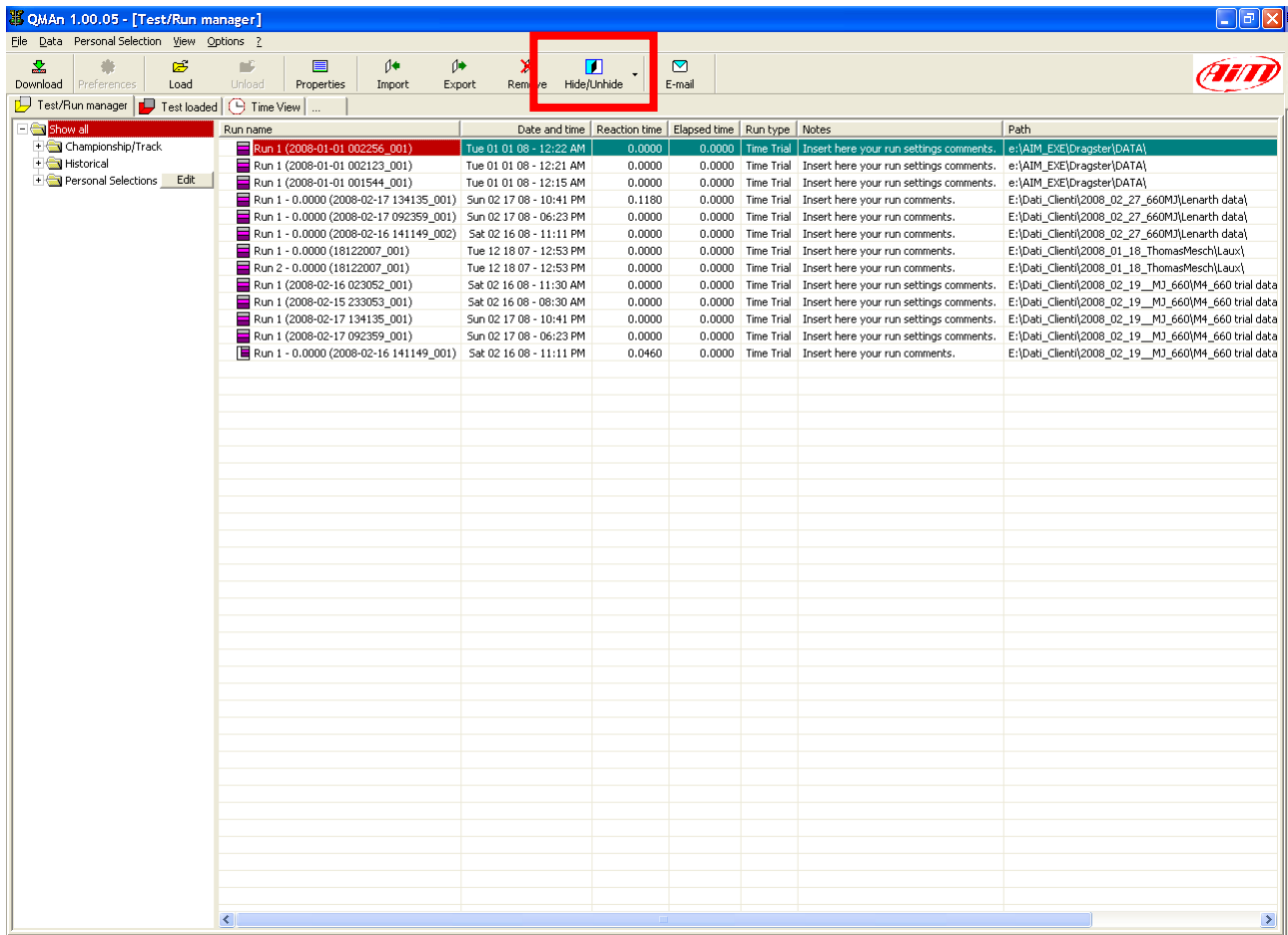
The main tab control including software views implements now a '...' button allowing new views to be added to software.

The lateral software toolbar is cleaner than before and shows 3D channels setting only when needed.



MAIN VIEW

Fixed bug on the population of the database in the main view, that used to badly manage the hidden runs.



The screenshot shows the QMAn 1.00.05 - [Test/Run manager] application window. The toolbar contains several icons, with the 'Hide/Unhide' icon (a blue square with a white 'H') highlighted by a red rectangular box. Below the toolbar, there is a tree view on the left showing 'Championship/Track', 'Historical', and 'Personal Selections'. The main area is a table with the following columns: Run name, Date and time, Reaction time, Elapsed time, Run type, Notes, and Path. The table contains 14 rows of data, with the first row highlighted in red.

Run name	Date and time	Reaction time	Elapsed time	Run type	Notes	Path
Run 1 (2008-01-01 002256_001)	Tue 01 01 08 - 12:22 AM	0.0000	0.0000	Time Trial	Insert here your run settings comments.	e:\AIM_EXE\Dragster\DATA\
Run 1 (2008-01-01 002123_001)	Tue 01 01 08 - 12:21 AM	0.0000	0.0000	Time Trial	Insert here your run settings comments.	e:\AIM_EXE\Dragster\DATA\
Run 1 (2008-01-01 001544_001)	Tue 01 01 08 - 12:15 AM	0.0000	0.0000	Time Trial	Insert here your run settings comments.	e:\AIM_EXE\Dragster\DATA\
Run 1 - 0.0000 (2008-02-17 134135_001)	Sun 02 17 08 - 10:41 PM	0.1180	0.0000	Time Trial	Insert here your run comments.	E:\Dati_Client\2008_02_27_660M\Lenarth data\
Run 1 - 0.0000 (2008-02-17 092359_001)	Sun 02 17 08 - 06:23 PM	0.0000	0.0000	Time Trial	Insert here your run comments.	E:\Dati_Client\2008_02_27_660M\Lenarth data\
Run 1 - 0.0000 (2008-02-16 141149_002)	Sat 02 16 08 - 11:11 PM	0.0000	0.0000	Time Trial	Insert here your run comments.	E:\Dati_Client\2008_02_27_660M\Lenarth data\
Run 1 - 0.0000 (18122007_001)	Tue 12 18 07 - 12:53 PM	0.0000	0.0000	Time Trial	Insert here your run comments.	E:\Dati_Client\2008_01_18_ThomasMesch\Laux\
Run 2 - 0.0000 (18122007_001)	Tue 12 18 07 - 12:53 PM	0.0000	0.0000	Time Trial	Insert here your run comments.	E:\Dati_Client\2008_01_18_ThomasMesch\Laux\
Run 1 (2008-02-16 023052_001)	Sat 02 16 08 - 11:30 AM	0.0000	0.0000	Time Trial	Insert here your run settings comments.	E:\Dati_Client\2008_02_19_MJ_660\MH_660 trial data\
Run 1 (2008-02-15 233053_001)	Sat 02 16 08 - 08:30 AM	0.0000	0.0000	Time Trial	Insert here your run settings comments.	E:\Dati_Client\2008_02_19_MJ_660\MH_660 trial data\
Run 1 (2008-02-17 134135_001)	Sun 02 17 08 - 10:41 PM	0.0000	0.0000	Time Trial	Insert here your run settings comments.	E:\Dati_Client\2008_02_19_MJ_660\MH_660 trial data\
Run 1 (2008-02-17 092359_001)	Sun 02 17 08 - 06:23 PM	0.0000	0.0000	Time Trial	Insert here your run settings comments.	E:\Dati_Client\2008_02_19_MJ_660\MH_660 trial data\
Run 1 - 0.0000 (2008-02-16 141149_001)	Sat 02 16 08 - 11:11 PM	0.0460	0.0000	Time Trial	Insert here your run comments.	E:\Dati_Client\2008_02_19_MJ_660\MH_660 trial data\

DRK FILES BUGS

Fixed bug preventing Speed channel from being automatically added to drk files.

Fixed channels top of scale and bottom of scale.

Fixed bug on automatic detecting of start of run.

QMAN 1.00.04 - Upgrades

Test Run Manager page

We implemented some bug fixes concerning the synchronization of the right part to the choices made in the left part of the page.

The following pictures describe the modifications, the first one captured from the release 1.00.04, the second from the release 1.00.03. As you can see we eliminated the “Show All” item (red rectangle in the second picture, old release) and we placed at the root of the tree structure all the formerly called “Historical” items (red rectangle in the first picture, new release).

