

AiM Infotech

K type thermocouple  
Car/bike/kart installations  
Race Studio 2 configuration

Release 1.00

---



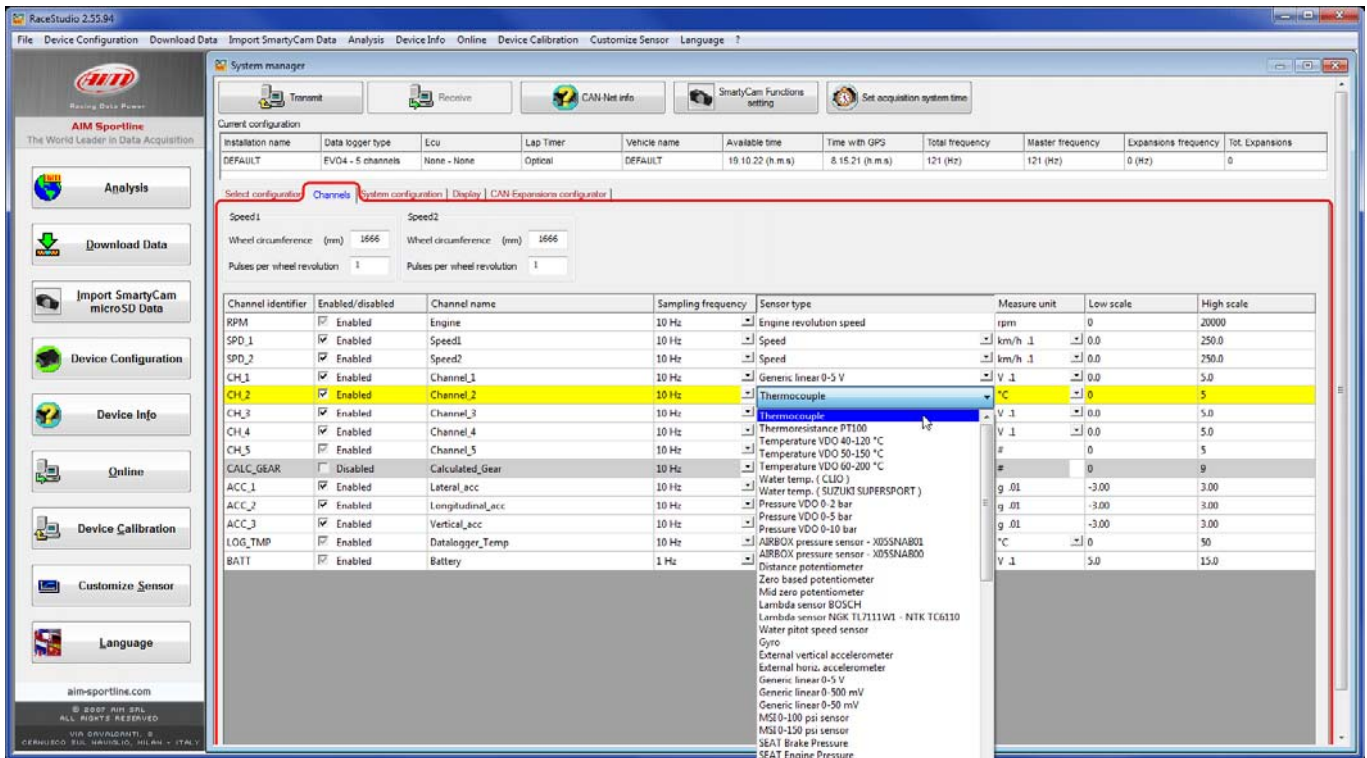
# 1 Introduction

When the K type thermo couple is physically connected to one channel of AiM device it is necessary to load it in the related configuration - configuration with AiM configuration software. In this datasheet it is loaded using **Race Studio 2** software.

# 2 Race Studio 2 configuration

To load the sensor in the device configuration:

- run the software, select the logger in use (i.e. EVO4) and the configuration where to load the sensor on and enter "Channel" layer;
- choose the channel where to set the sensor on (i.e. channel 2) and select "Thermocouple" in "Sensor type" column as shown below.





The sensor is set on the desired channel. Transmit the configuration to the logger pressing "Transmit".

